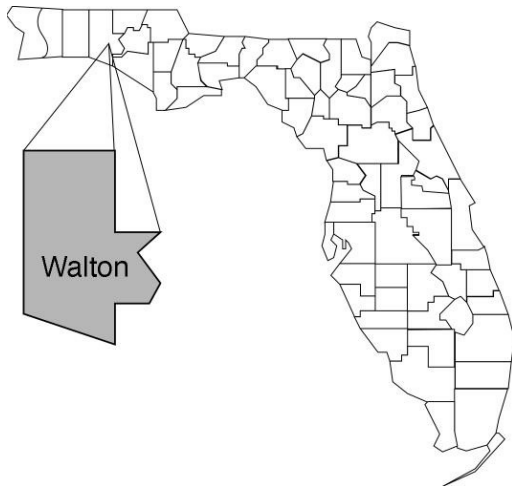


Walton

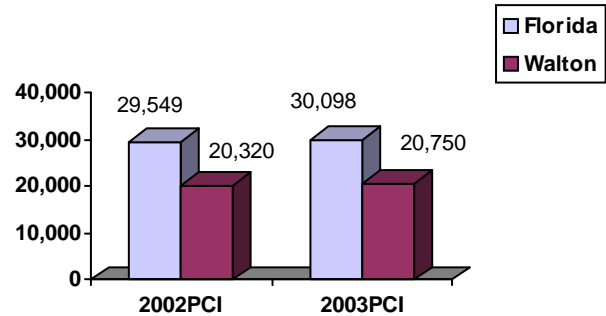
Community Data*



Population Density (per Sq. Mile):

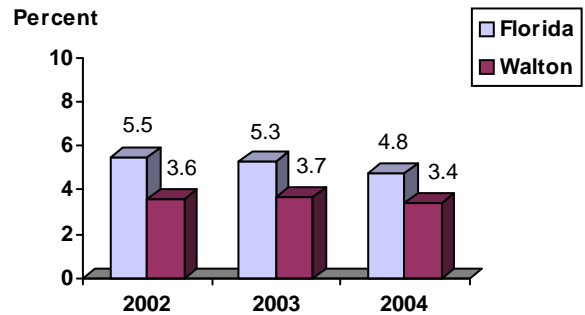
Florida	325		
Walton	48	Rank in State:	48

Per Capita Income (\$):

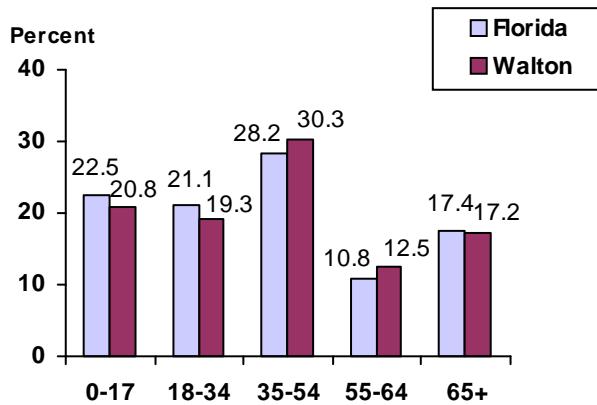


County Seat:	Defuniak Springs pop.	5,207
County Land Area (Sq. Miles):		1,057.6
County Water Area (Sq. Miles):		180.5
Population (2004):		50,543
	Projected (2010):	62,301

Unemployment Rate:



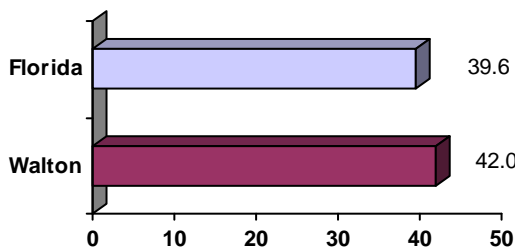
Population by Age Range:



Crime Rate:

	Rate per 100,000 Pop.	Percent Change 2003 to 2004
Florida	4,855.3	-6.0
Walton	2,997.4	-3.6

Median Age:



Births to Unwed Teenage Mothers:

	Number of Live Births	Births to Unwed Teen Mothers (number)	Births to Unwed Teen Mothers (percent)
Florida	218,045	20,449	9.4%
Walton	560	51	9.1%

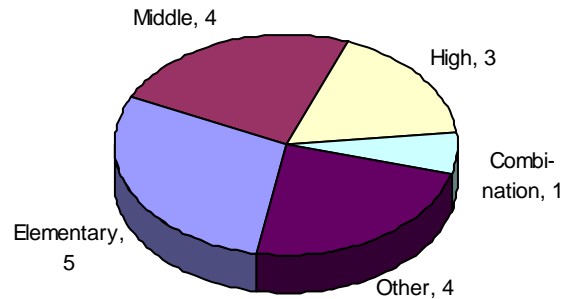
*Unless otherwise indicated, community data shows Florida Statistical Abstract information for 2004.

Walton

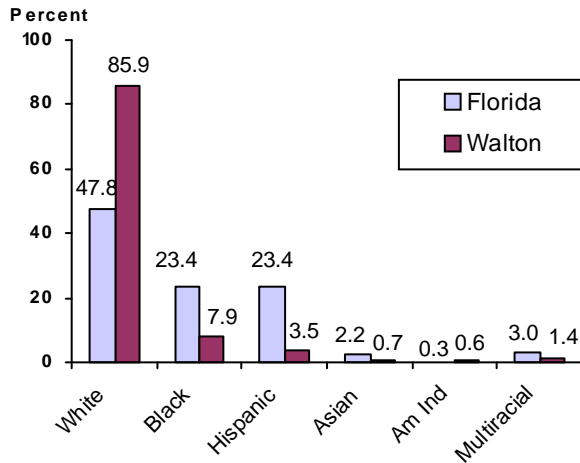
Education Data*

PK-12 Public School Membership: 6,892
Rank: 44

Number and Type of Public Schools:



PK-12 Membership by Race:

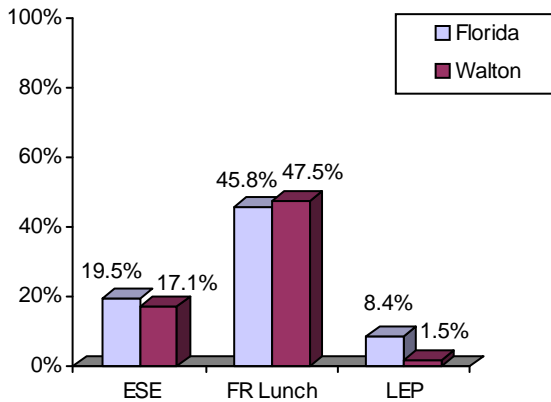


Average Teacher Salary by Degree Level:

	Bachelor's	Master's	Specialist	Doctorate
Florida	\$39,492	\$47,006	\$55,238	\$53,142
Walton	\$39,013	\$45,748	\$46,707	\$55,612
All degrees:	Florida = \$42,702	Walton = \$41,550		

Special Needs Populations:

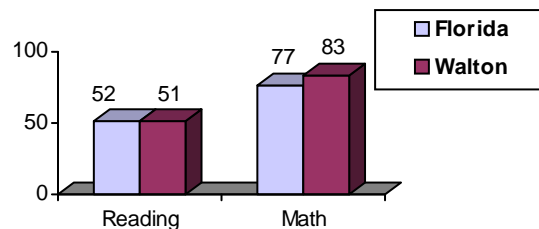
Free/Reduced-Price Lunch, ESE, and LEP Membership as a percentage of Total Membership



Percentage of Teachers with Degree Beyond Bachelor's: 35.7%

Student Performance:

Percent Passing Grade 10 Florida Comprehensive Assessment Test



Florida Writing Assessment Scores (Scale: 0 - 6)

	Grade 4	Grade 8	Grade 10
Florida	3.9	4.0	3.9
Walton	3.9	4.1	3.9

Administrators-to Staff Ratios:

	Administrators to Classroom Teachers	Administrators to Total Staff
Florida	1 : 15.42	1 : 30.20
Walton	1 : 11.22	1 : 24.27

Dropout Rate:

Florida : 3.5% Walton : 2.6%

Per-Student Operating Costs (2004-05):

	Florida	Walton
Expenditures per FTE	\$6,072	\$6,171

*Education data is for 2005-06 unless otherwise indicated.