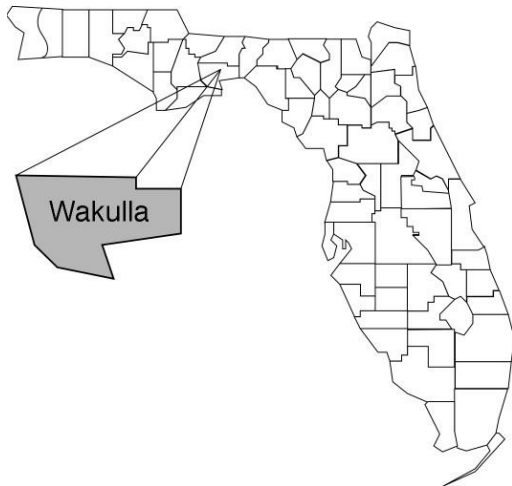


Wakulla

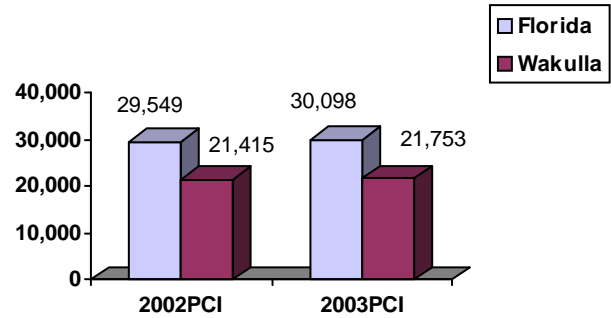
Community Data*



Population Density (per Sq. Mile):

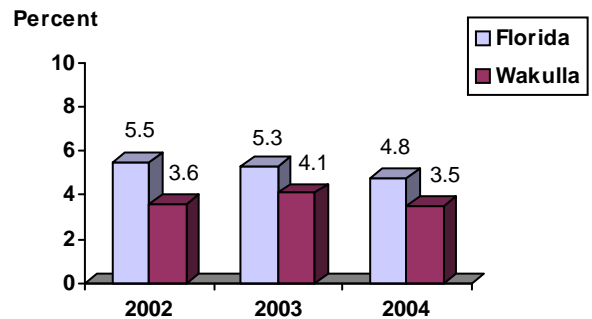
Florida	325		
Wakulla	42	Rank in State:	51

Per Capita Income (\$):

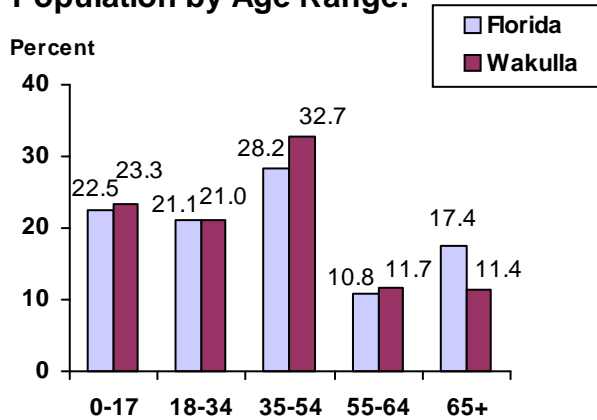


County Seat:	Crawfordville	pop.	unavailable
County Land Area (Sq. Miles):			606.7
County Water Area (Sq. Miles):			129.1
Population (2004):			25,505
Projected (2010):			31,670

Unemployment Rate:



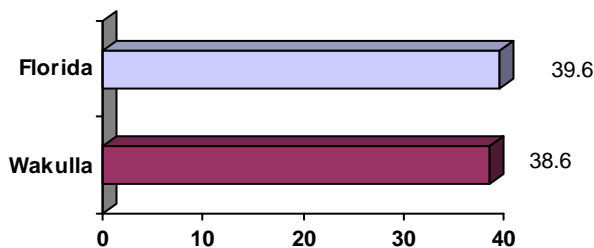
Population by Age Range:



Crime Rate:

	Rate per 100,000 Pop.	Percent Change 2003 to 2004
Florida	4,855.3	-6.0
Wakulla	2,536.8	-8.3

Median Age:



Births to Unwed Teenage Mothers:

	Number of Live Births	Births to Unwed Teen Mothers (number)	Births to Unwed Teen Mothers (percent)
Florida	218,045	20,449	9.4%
Wakulla	309	30	9.7%

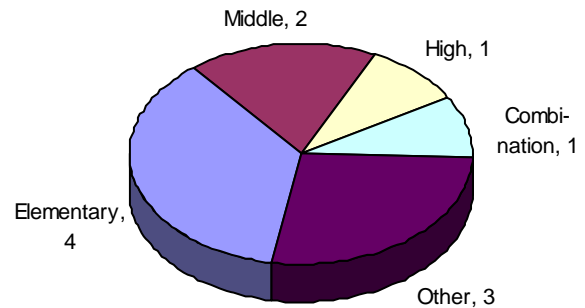
*Unless otherwise indicated, community data shows Florida Statistical Abstract information for 2004.

Wakulla

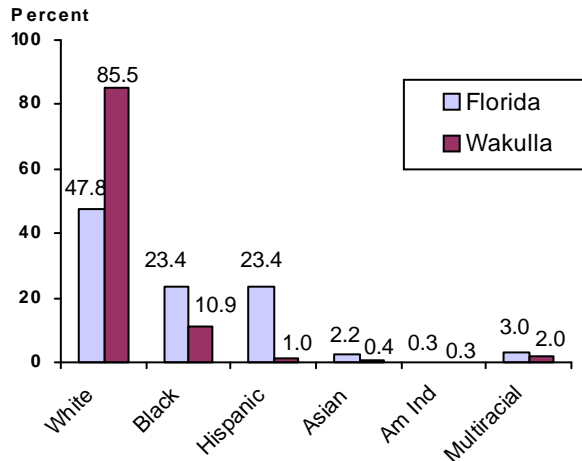
Education Data*

PK-12 Public School Membership: 4,914
Rank: 50

Number and Type of Public Schools:



PK-12 Membership by Race:

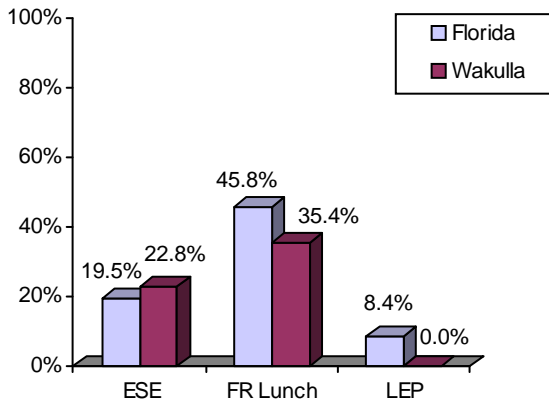


Average Teacher Salary by Degree Level:

	Bachelor's	Master's	Specialist	Doctorate
Florida	\$39,492	\$47,006	\$55,238	\$53,142
Wakulla	\$35,928	\$42,451	\$43,883	\$34,049
All degrees:	Florida = \$42,702	Wakulla = \$38,696		

Special Needs Populations:

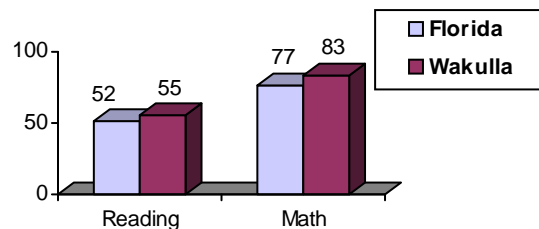
Free/Reduced-Price Lunch, ESE, and LEP Membership as a percentage of Total Membership



Percentage of Teachers with Degree Beyond Bachelor's: 42.2%

Student Performance:

Percent Passing Grade 10 Florida Comprehensive Assessment Test



Florida Writing Assessment Scores (Scale: 0 - 6)

	Grade 4	Grade 8	Grade 10
Florida	3.9	4.0	3.9
Wakulla	3.8	4.1	4.0

Administrators-to Staff Ratios:

	Administrators to Classroom Teachers	Administrators to Total Staff
Florida	1 : 15.42	1 : 30.20
Wakulla	1 : 9.86	1 : 21.03

Dropout Rate:

Florida : 3.5% Wakulla : 5.7%

Per-Student Operating Costs (2004-05):

	Florida	Wakulla
Expenditures per FTE	\$6,072	\$5,467