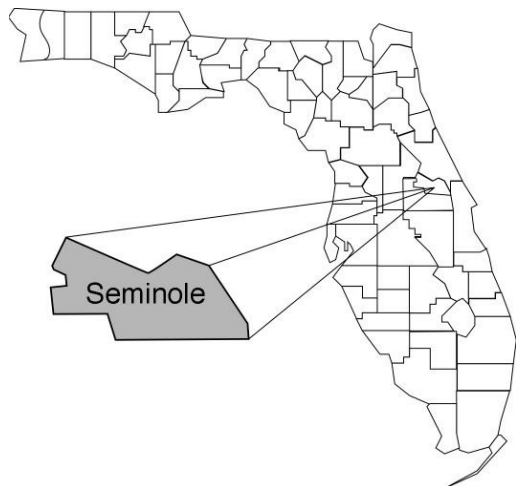


Seminole

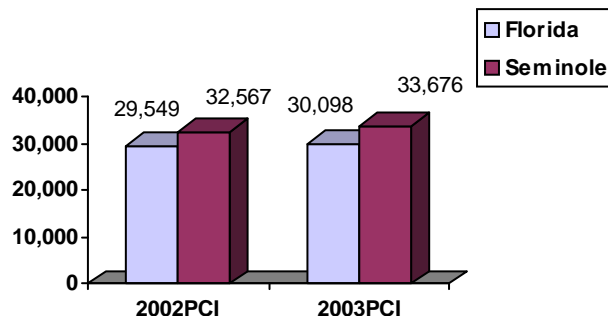
Community Data*



Population Density (per Sq. Mile):

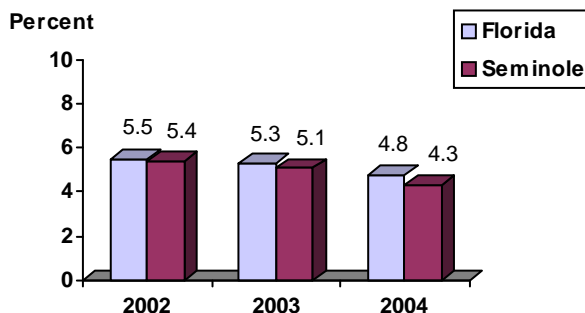
Florida	325		
Seminole	1,309	Rank in State:	3

Per Capita Income (\$):

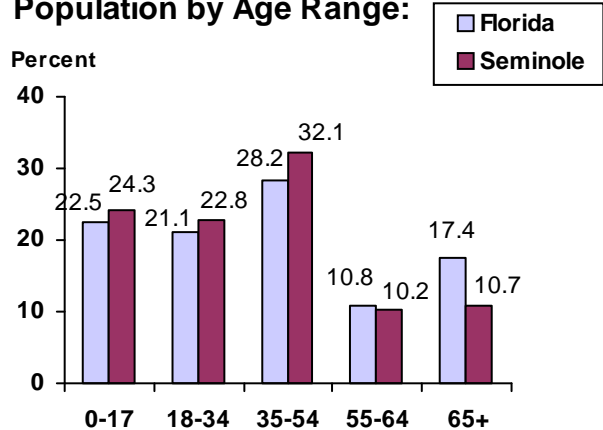


County Seat: Sanford	pop.	46,078
County Land Area (Sq. Miles):		308.2
County Water Area (Sq. Miles):		36.7
Population (2004):		403,361
Projected (2010):		456,279

Unemployment Rate:



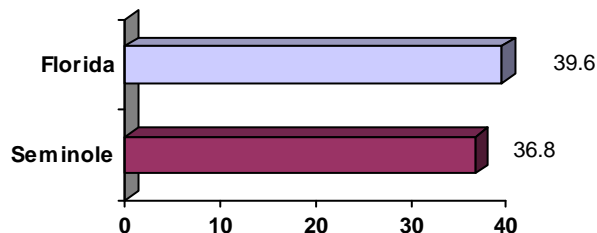
Population by Age Range:



Crime Rate:

	Rate per 100,000 Pop.	Percent Change 2003 to 2004
Florida	4,855.3	-6.0
Seminole	3,060.5	-11.3

Median Age:



Births to Unwed Teenage Mothers:

	Number of Live Births	Births to Unwed Teen Mothers (number)	Births to Unwed Teen Mothers (percent)
Florida	218,045	20,449	9.4%
Seminole	4,741	318	6.7%

*Unless otherwise indicated, community data shows Florida Statistical Abstract information for 2004.

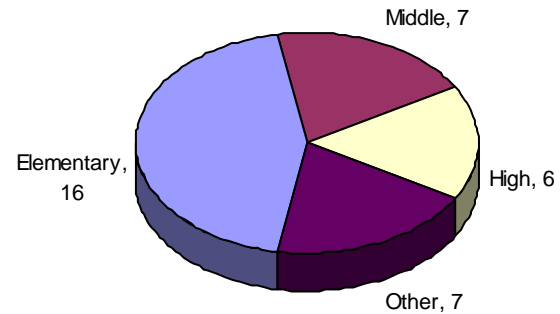
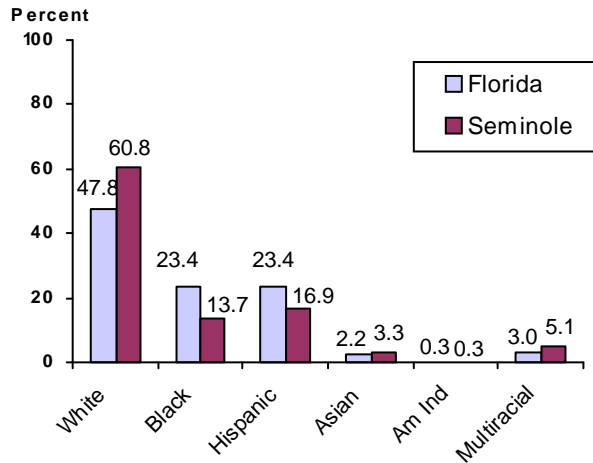
Seminole

Education Data*

PK-12 Public School Membership: 67,473
Rank: 11

Number and Type of Public Schools:

PK-12 Membership by Race:

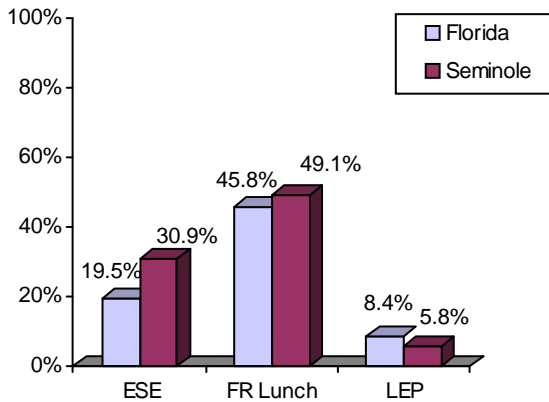


Average Teacher Salary by Degree Level:

	Bachelor's	Master's	Specialist	Doctorate
Florida	\$39,492	\$47,006	\$55,238	\$53,142
Seminole	\$37,622	\$46,280	\$53,533	\$56,593
All degrees:	Florida = \$42,702	Seminole = \$41,826		

Special Needs Populations:

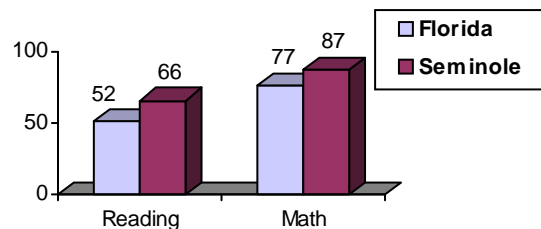
Free/Reduced-Price Lunch, ESE, and LEP Membership as a percentage of Total Membership



Percentage of Teachers with Degree Beyond Bachelor's: 44.4%

Student Performance:

Percent Passing Grade 10 Florida Comprehensive Assessment Test



Florida Writing Assessment Scores (Scale: 0 - 6)

	Grade 4	Grade 8	Grade 10
Florida	3.9	4.0	3.9
Seminole	3.8	4.2	4.0

Administrators-to Staff Ratios

	Administrators to Classroom Teachers	Administrators to Total Staff
Florida	1 : 15.42	1 : 30.20
Seminole	1 : 18.56	1 : 33.45

Dropout Rate:

Florida : 3.5% Seminole : 1.2%

Per-Student Operating Costs (2004-05):

	Florida	Seminole
Expenditures per FTE	\$6,072	\$5,428