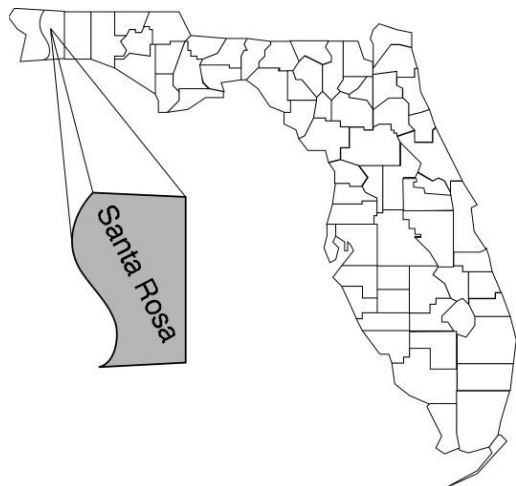


# Santa Rosa

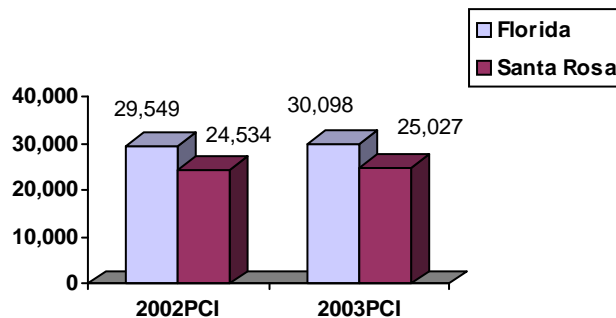
## Community Data\*



### Population Density (per Sq. Mile):

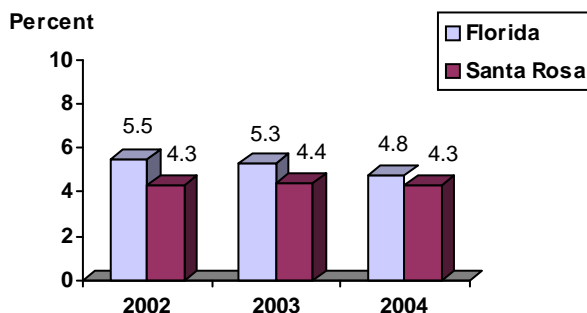
Florida	325		
Santa Rosa	132	Rank in State:	34

### Per Capita Income (\$):

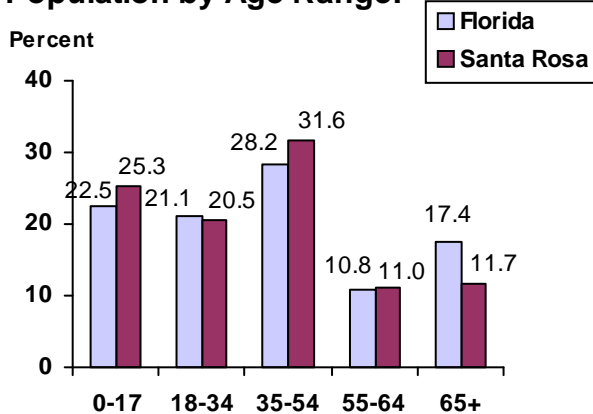


<b>County Seat:</b> Milton	pop.	7,512
<b>County Land Area (Sq. Miles):</b>		1,016.9
<b>County Water Area (Sq. Miles):</b>		156.7
<b>Population (2004):</b>		133,721
Projected (2010):		157,645

### Unemployment Rate:



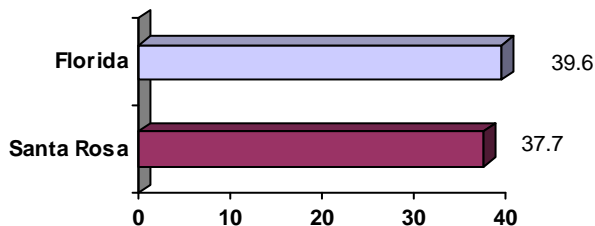
### Population by Age Range:



### Crime Rate:

	Rate per 100,000 Pop.	Percent Change 2003 to 2004
Florida	4,855.3	-6.0
Santa Rosa	1,968.3	-8.4

### Median Age:



### Births to Unwed Teenage Mothers:

	Number of Live Births	Births to Unwed Teen Mothers (number)	Births to Unwed Teen Mothers (percent)
Florida	218,045	20,449	9.4%
Santa Rosa	1,686	119	7.1%

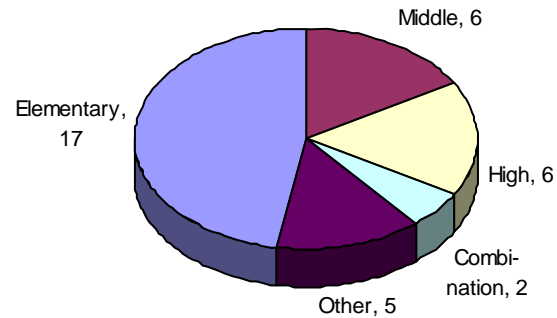
\*Unless otherwise indicated, community data shows Florida Statistical Abstract information for 2004.

# Santa Rosa

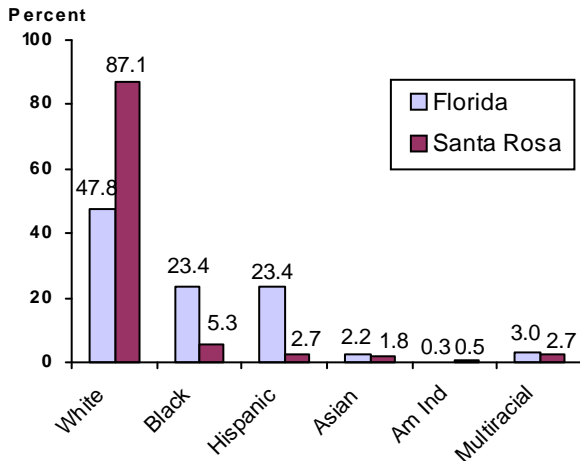
## Education Data\*

**PK-12 Public School Membership:** 25,187  
**Rank:** 28

### Number and Type of Public Schools:



### PK-12 Membership by Race:

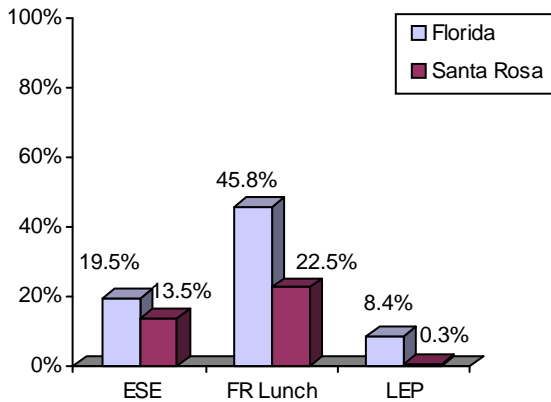


### Average Teacher Salary by Degree Level:

	Bachelor's	Master's	Specialist	Doctorate
Florida	\$39,492	\$47,006	\$55,238	\$53,142
Santa Rosa	\$38,579	\$45,607	\$45,934	\$47,027
All degrees:	Florida = \$42,702	Santa Rosa = \$41,007		

### Special Needs Populations:

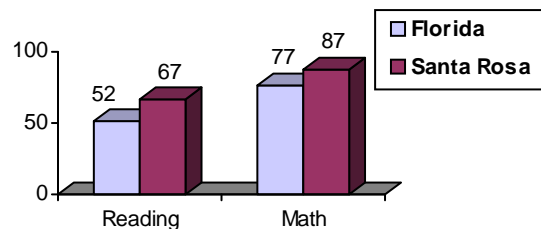
Free/Reduced-Price Lunch, ESE, and LEP Membership as a percentage of Total Membership



### Percentage of Teachers with Degree Beyond Bachelor's: 34.3%

### Student Performance:

Percent Passing Grade 10 Florida Comprehensive Assessment Test



### Florida Writing Assessment Scores (Scale: 0 - 6)

	Grade 4	Grade 8	Grade 10
Florida	3.9	4.0	3.9
Santa Rosa	3.9	4.0	4.1

### Administrators-to Staff Ratios:

	Administrators to Classroom Teachers	Administrators to Total Staff
Florida	1 : 15.42	1 : 30.20
Santa Rosa	1 : 17.95	1 : 29.65

### Dropout Rate:

Florida : 3.5%      Santa Rosa : 2.3%

### Per-Student Operating Costs (2004-05):

	Florida	Santa Rosa
Expenditures per FTE	\$6,072	\$5,371