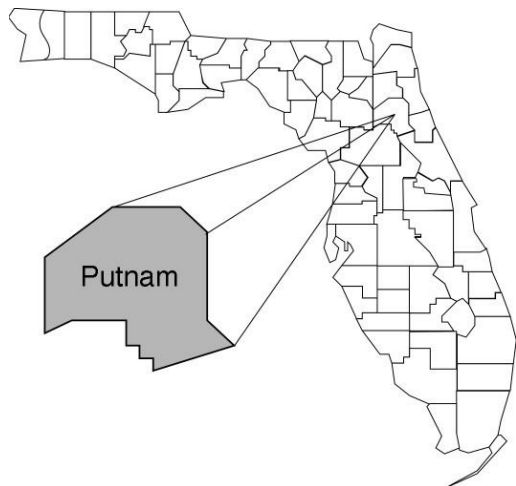


Putnam

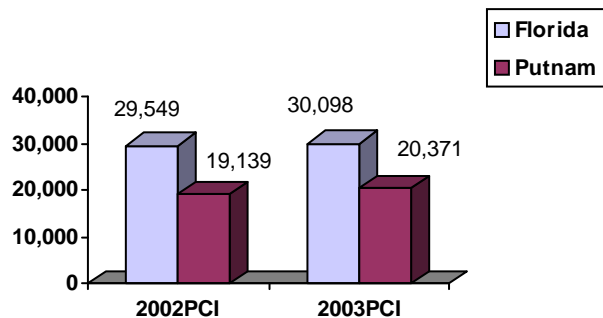
Community Data*



Population Density (per Sq. Mile):

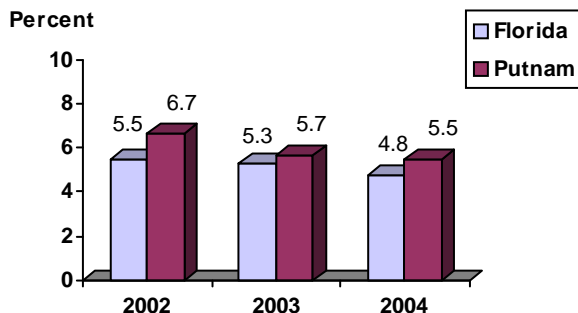
Florida	325		
Putnam	101	Rank in State:	36

Per Capita Income (\$):

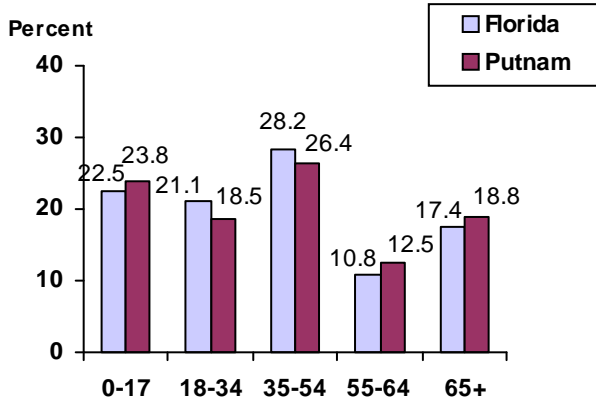


County Seat: Palatka	pop.	10,820
County Land Area (Sq. Miles):		721.9
County Water Area (Sq. Miles):		105.3
Population (2004):		73,226
Projected (2010):		76,844

Unemployment Rate:



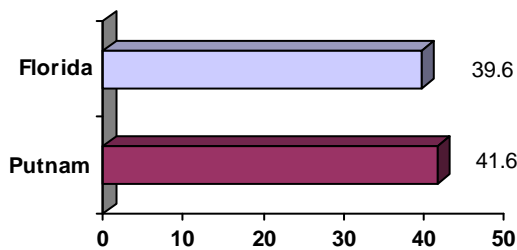
Population by Age Range:



Crime Rate:

	Rate per 100,000 Pop.	Percent Change 2003 to 2004
Florida	4,855.3	-6.0
Putnam	5,683.8	5.7

Median Age:



Births to Unwed Teenage Mothers:

	Number of Live Births	Births to Unwed Teen Mothers (number)	Births to Unwed Teen Mothers (percent)
Florida	218,045	20,449	9.4%
Putnam	965	150	15.5%

*Unless otherwise indicated, community data shows Florida Statistical Abstract information for 2004.

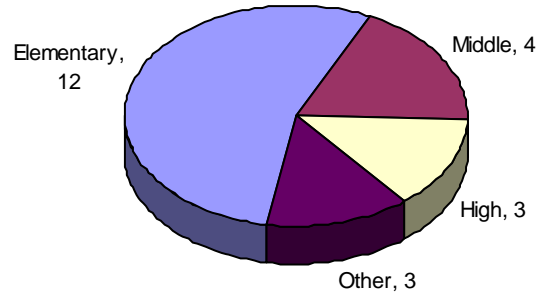
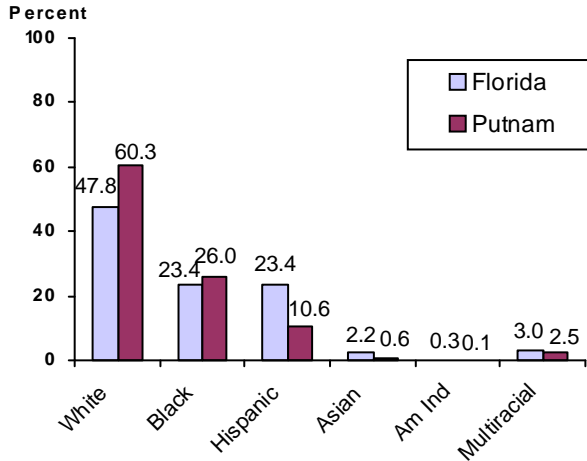
Putnam

Education Data*

PK-12 Public School Membership: 12,274
Rank: 34

Number and Type of Public Schools:

PK-12 Membership by Race:

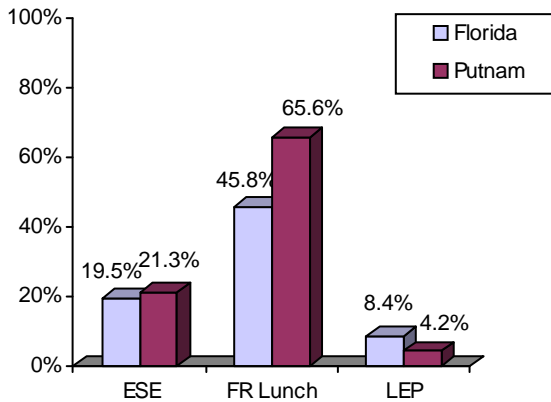


Average Teacher Salary by Degree Level:

	Bachelor's	Master's	Specialist	Doctorate
Florida	\$39,492	\$47,006	\$55,238	\$53,142
Putnam	\$38,985	\$47,709	\$50,177	\$40,179
All degrees:	Florida = \$42,702	Putnam = \$41,745		

Special Needs Populations:

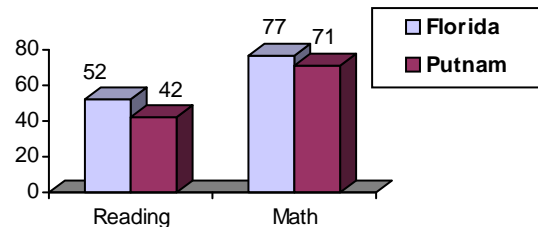
Free/Reduced-Price Lunch, ESE, and LEP Membership as a percentage of Total Membership



Percentage of Teachers with Degree Beyond Bachelor's: 31.9%

Student Performance:

Percent Passing Grade 10 Florida Comprehensive Assessment Test



Florida Writing Assessment Scores (Scale: 0 - 6)

	Grade 4	Grade 8	Grade 10
Florida	3.9	4.0	3.9
Putnam	3.9	3.8	3.6

Administrators-to Staff Ratios:

	Administrators to Classroom Teachers	Administrators to Total Staff
Florida	1 : 15.42	1 : 30.20
Putnam	1 : 9.91	1 : 25.13

Dropout Rate:

Florida : 3.5% Putnam : 4.0%

Per-Student Operating Costs (2004-05):

	Florida	Putnam
Expenditures per FTE	\$6,072	\$5,801