

Pasco

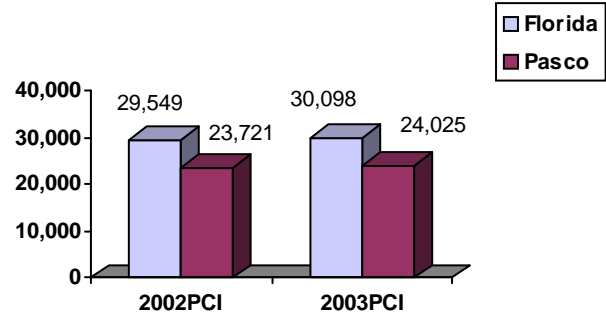
Community Data*



Population Density (per Sq. Mile):

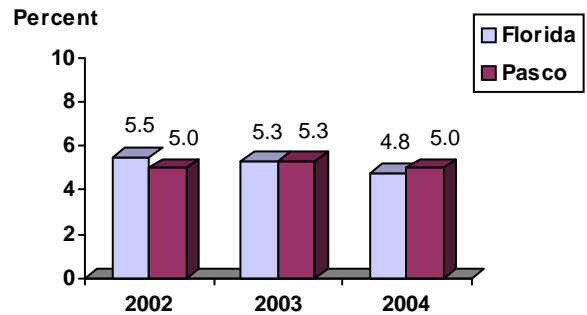
Florida	325		
Pasco	523	Rank in State:	11

Per Capita Income (\$):

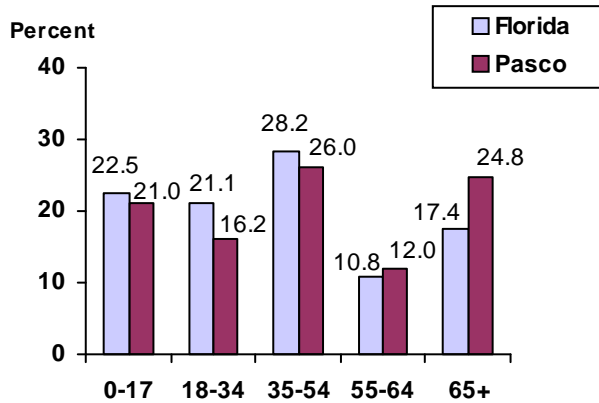


County Seat:	Dade City	pop.	6,615
County Land Area (Sq. Miles):			744.9
County Water Area (Sq. Miles):			123.1
Population (2004):			389,776
Projected (2010):			445,559

Unemployment Rate:



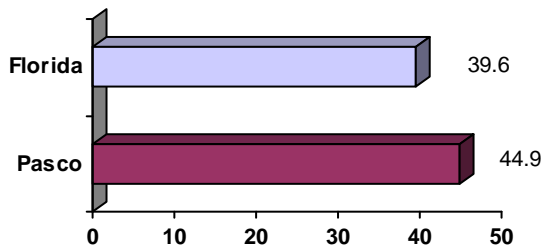
Population by Age Range:



Crime Rate:

	Rate per 100,000 Pop.	Percent Change 2003 to 2004
Florida	4,855.3	-6.0
Pasco	3,907.9	0.2

Median Age:



Births to Unwed Teenage Mothers:

	Number of Live Births	Births to Unwed Teen Mothers (number)	Births to Unwed Teen Mothers (percent)
Florida	218,045	20,449	9.4%
Pasco	4,592	370	8.1%

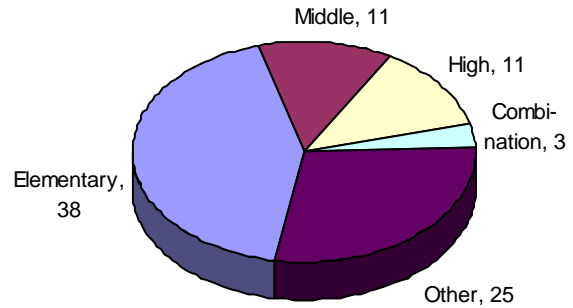
*Unless otherwise indicated, community data shows Florida Statistical Abstract information for 2004.

Pasco

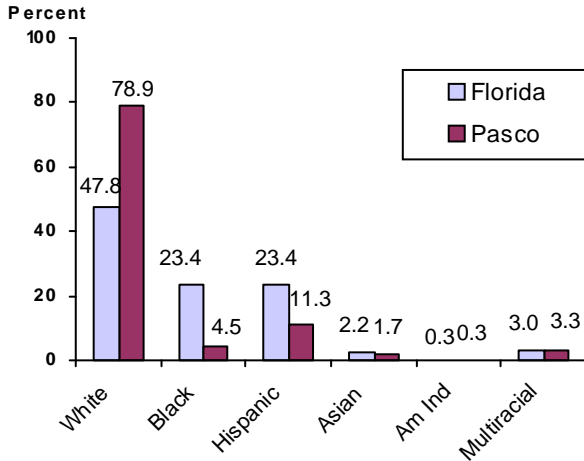
Education Data*

PK-12 Public School Membership: 62,768
Rank: 13

Number and Type of Public Schools:



PK-12 Membership by Race:

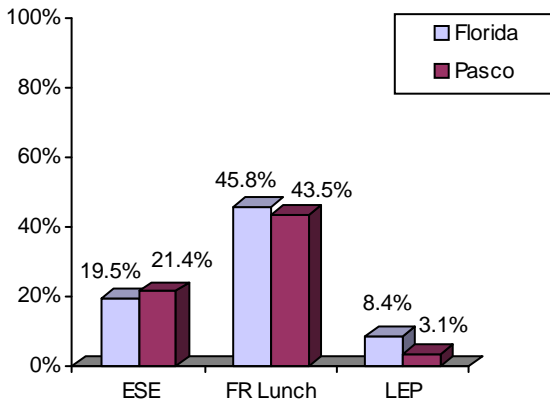


Average Teacher Salary by Degree Level:

	Bachelor's	Master's	Specialist	Doctorate
Florida	\$39,492	\$47,006	\$55,238	\$53,142
Pasco	\$38,596	\$44,981	\$48,021	\$48,090
All degrees:	Florida = \$42,702	Pasco = \$40,939		

Special Needs Populations:

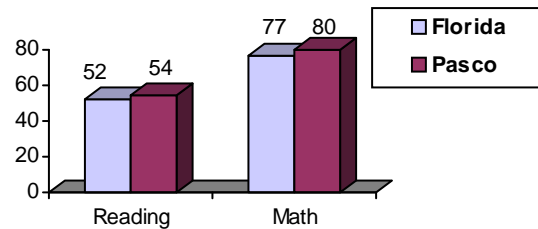
Free/Reduced-Price Lunch, ESE, and LEP Membership as a percentage of Total Membership



Percentage of Teachers with Degree Beyond Bachelor's: 35.8%

Student Performance:

Percent Passing Grade 10 Florida Comprehensive Assessment Test



Florida Writing Assessment Scores (Scale: 0 - 6)

	Grade 4	Grade 8	Grade 10
Florida	3.9	4.0	3.9
Pasco	3.6	3.9	3.9

Administrators-to Staff Ratios:

	Administrators to Classroom Teachers	Administrators to Total Staff
Florida	1 : 15.42	1 : 30.20
Pasco	1 : 16.05	1 : 32.20

Dropout Rate:

Florida : 3.5% Pasco : 4.2%

Per-Student Operating Costs (2004-05):

	Florida	Pasco
Expenditures per FTE	\$6,072	\$5,864