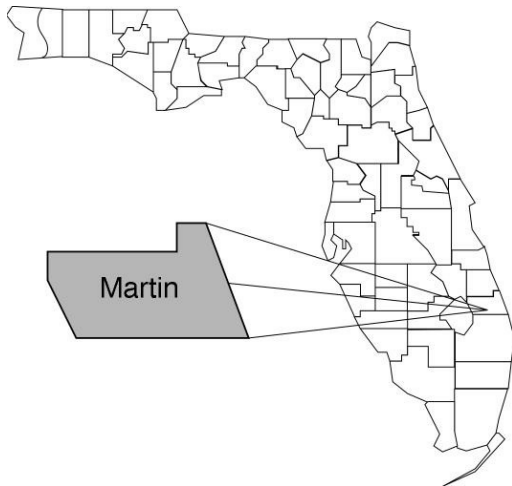


# Martin

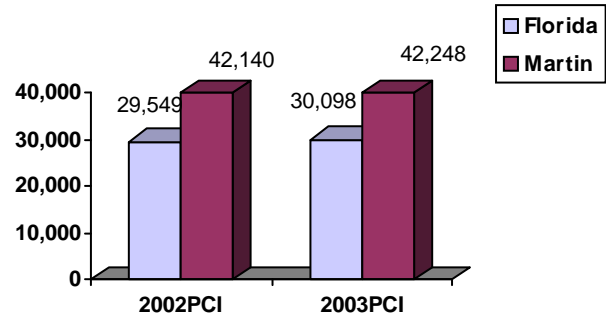
## Community Data\*



### Population Density (per Sq. Mile):

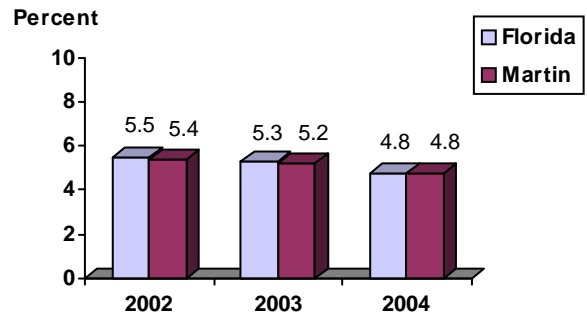
Florida	325	
Martin	248	Rank in State: 24

### Per Capita Income (\$):

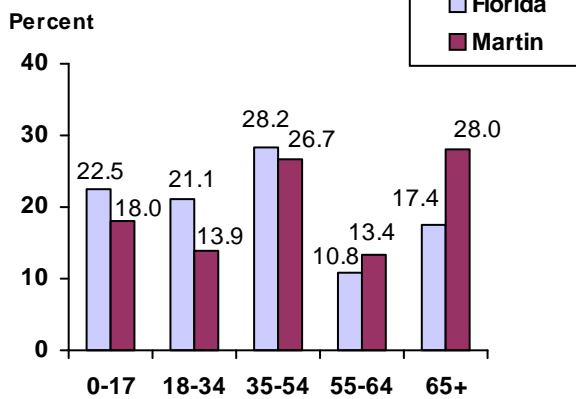


<b>County Seat:</b> Stuart	pop.	15,922
<b>County Land Area (Sq. Miles):</b>		555.6
<b>County Water Area (Sq. Miles):</b>		197.2
<b>Population (2004):</b>		137,637
Projected (2010):		154,019

### Unemployment Rate:



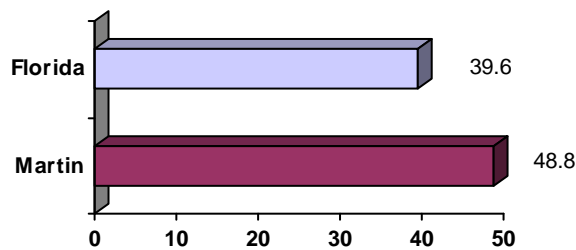
### Population by Age Range:



### Crime Rate:

	Rate per 100,000 Pop.	Percent Change 2003 to 2004
Florida	4,855.3	-6.0
Martin	3,254.2	-6.6

### Median Age:



### Births to Unwed Teenage Mothers:

	Number of Live Births	Births to Unwed Teen Mothers (number)	Births to Unwed Teen Mothers (percent)
Florida	218,045	20,449	9.4%
Martin	1,290	122	9.5%

\*Unless otherwise indicated, community data shows Florida Statistical Abstract information for 2004.

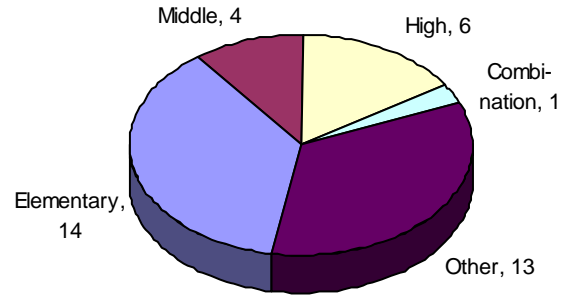
# Martin

## Education Data\*

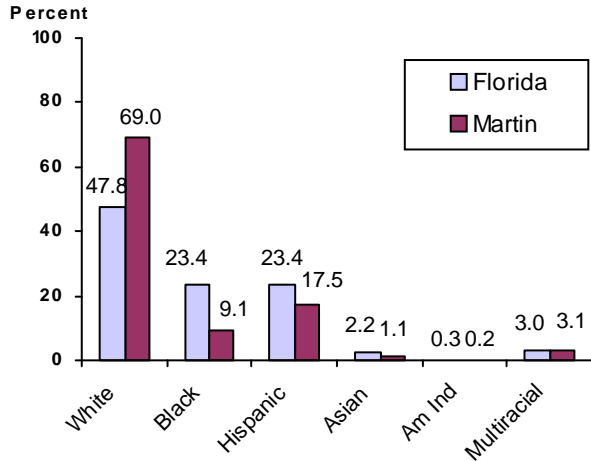
**PK-12 Public School Membership:** 18,141

Rank: 30

### Number and Type of Public Schools:



### PK-12 Membership by Race:

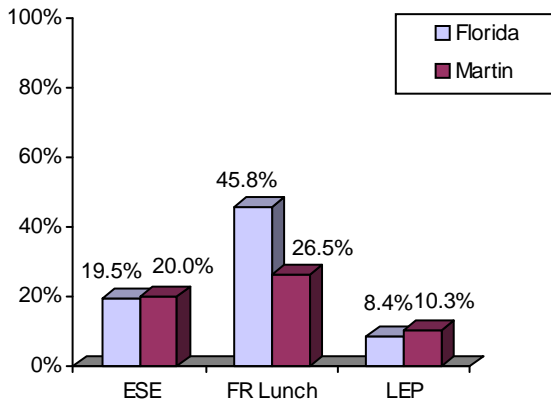


### Average Teacher Salary by Degree Level:

	Bachelor's	Master's	Specialist	Doctorate
Florida	\$39,492	\$47,006	\$55,238	\$53,142
Martin	\$40,947	\$47,241	\$55,376	\$53,213
All degrees:	Florida = \$42,702	Martin = \$43,585		

### Special Needs Populations:

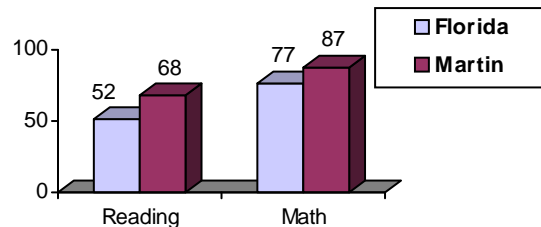
Free/Reduced-Price Lunch, ESE, and LEP Membership as a percentage of Total Membership



### Percentage of Teachers with Degree Beyond Bachelor's: 38.1%

### Student Performance:

Percent Passing Grade 10 Florida Comprehensive Assessment Test



### Florida Writing Assessment Scores (Scale: 0 - 6)

	Grade 4	Grade 8	Grade 10
Florida	3.9	4.0	3.9
Martin	4.1	4.3	4.1

### Administrators-to Staff Ratios:

	Administrators to Classroom Teachers	Administrators to Total Staff
Florida	1 : 15.42	1 : 30.20
Martin	1 : 16.49	1 : 31.88

### Dropout Rate:

Florida : 3.5%      Martin : 0.4%

### Per-Student Operating Costs (2004-05):

	Florida	Martin
Expenditures per FTE	\$6,072	\$6,289

\*Education data is for 2005-06 unless otherwise indicated.