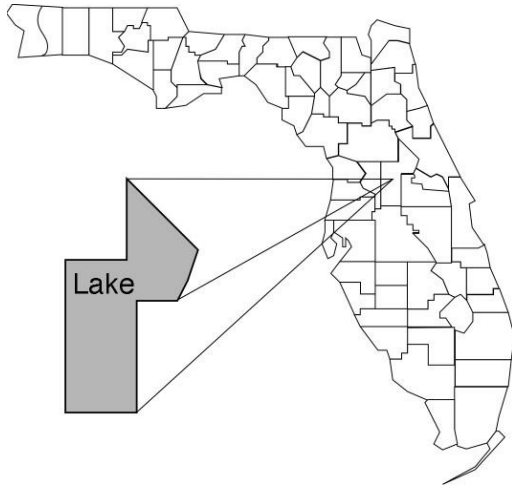


# Lake

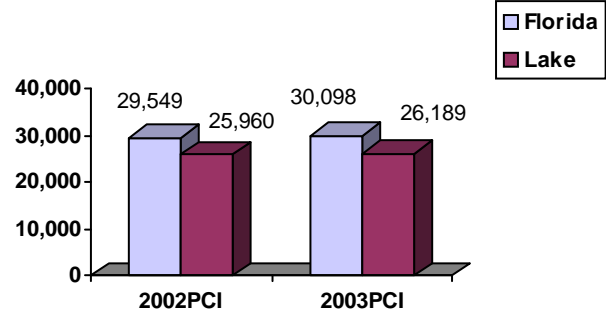
## Community Data\*



### Population Density (per Sq. Mile):

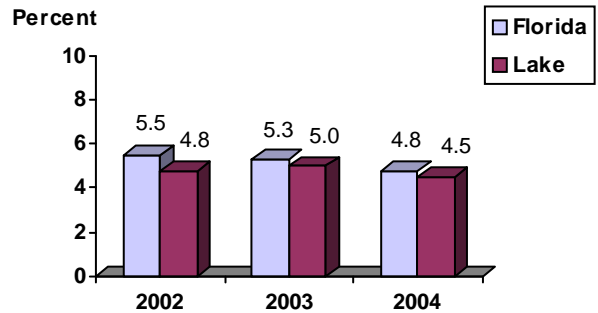
Florida	325		
Lake	264	Rank in State:	22

### Per Capita Income (\$):

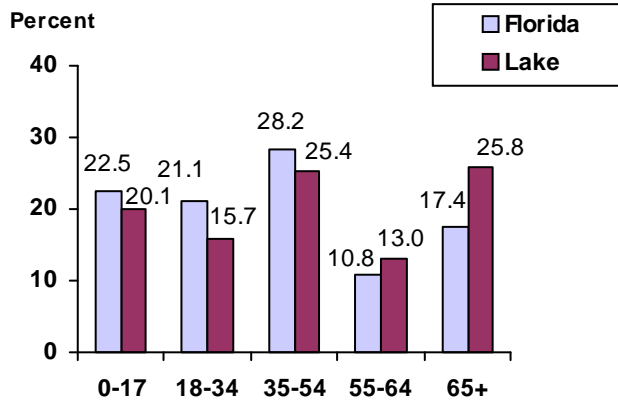


<b>County Seat:</b>	Tavares	pop.	10,938
<b>County Land Area (Sq. Miles):</b>			953.2
<b>County Water Area (Sq. Miles):</b>			203.3
<b>Population (2004):</b>			251,878
Projected (2010):			303,626

### Unemployment Rate:



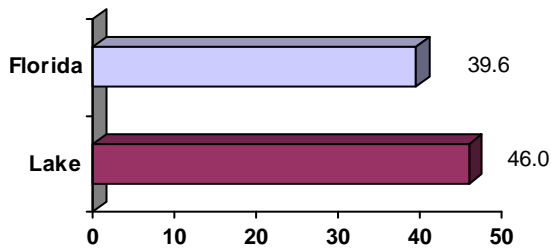
### Population by Age Range:



### Crime Rate:

	Rate per 100,000 Pop.	Percent Change 2003 to 2004
Florida	4,855.3	-6.0
Lake	3,281.0	-1.4

### Median Age:



### Births to Unwed Teenage Mothers:

	Number of Live Births	Births to Unwed Teen Mothers (number)	Births to Unwed Teen Mothers (percent)
Florida	218,045	20,449	9.4%
Lake	3,034	302	10.0%

\*Unless otherwise indicated, community data shows Florida Statistical Abstract information for 2004.

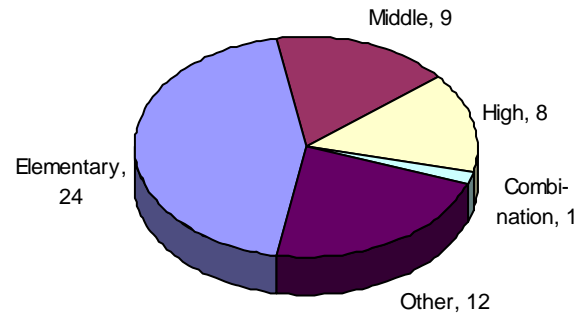
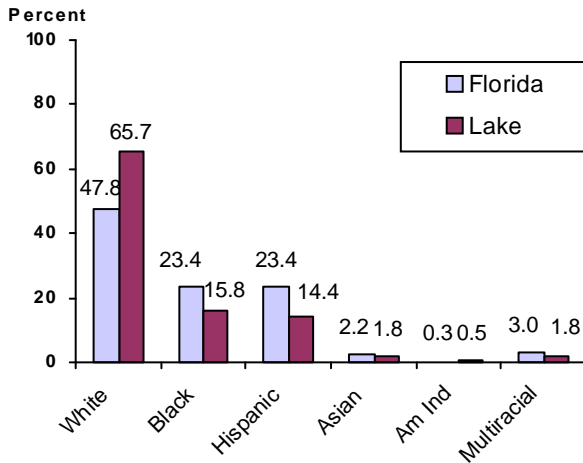
# Lake

## Education Data\*

**PK-12 Public School Membership:** 38,052  
**Rank:** 20

### Number and Type of Public Schools:

### PK-12 Membership by Race:

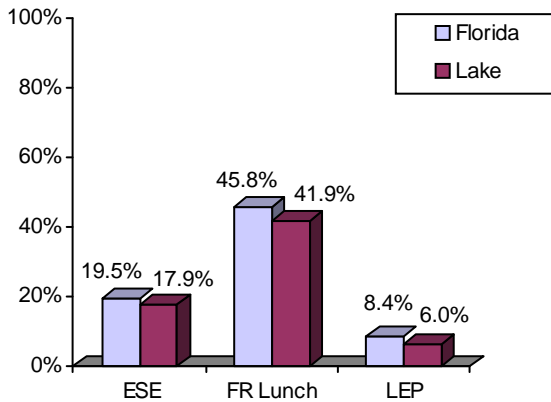


### Average Teacher Salary by Degree Level:

	Bachelor's	Master's	Specialist	Doctorate
Florida	\$39,492	\$47,006	\$55,238	\$53,142
Lake	\$37,760	\$43,966		\$46,828
All degrees:	Florida = \$42,702			Lake = \$39,851

### Special Needs Populations:

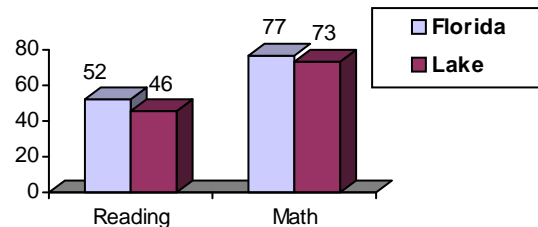
Free/Reduced-Price Lunch, ESE, and LEP Membership as a percentage of Total Membership



### Percentage of Teachers with Degree Beyond Bachelor's: 33.3%

### Student Performance:

Percent Passing Grade 10 Florida Comprehensive Assessment Test



### Florida Writing Assessment Scores (Scale: 0 - 6)

	Grade 4	Grade 8	Grade 10
Florida	3.9	4.0	3.9
Lake	3.8	3.8	3.7

### Administrators-to Staff Ratios:

	Administrators to Classroom Teachers	Administrators to Total Staff
Florida	1 : 15.42	1 : 30.20
Lake	1 : 14.90	1 : 31.54

### Dropout Rate:

Florida : 3.5%      Lake : 4.7%

### Per-Student Operating Costs (2004-05):

	Florida	Lake
Expenditures per FTE	\$6,072	\$5,860