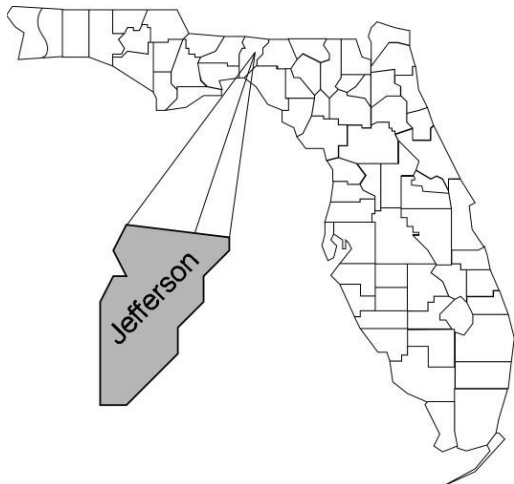


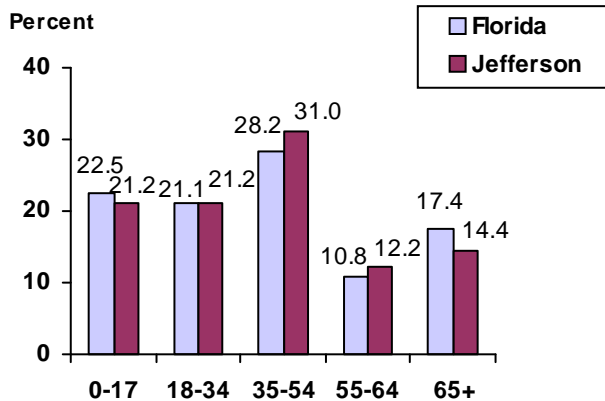
Jefferson

Community Data*

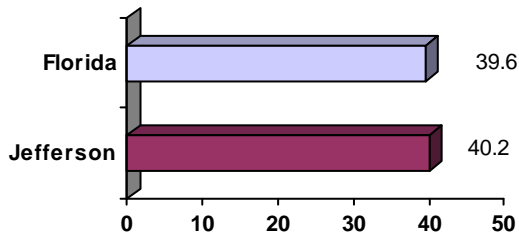


County Seat: Monticello pop. 2,537
County Land Area (Sq. Miles): 597.7
County Water Area (Sq. Miles): 38.9
Population (2004): 14,064
 Projected (2010): 14,603

Population by Age Range:



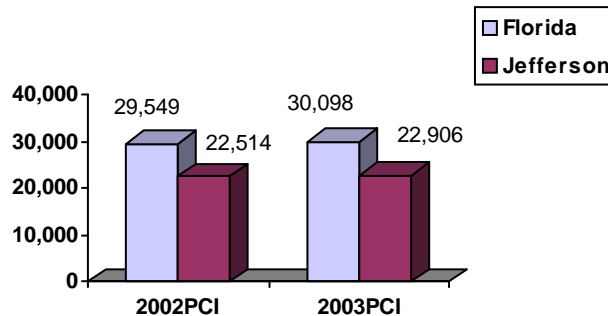
Median Age:



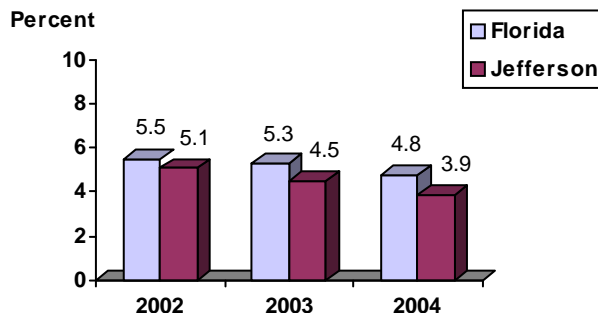
Population Density (per Sq. Mile):

Florida 325
 Jefferson 24 Rank in State: 61

Per Capita Income (\$):



Unemployment Rate:



Crime Rate:

	Rate per 100,000 Pop.	Percent Change 2003 to 2004
Florida	4,855.3	-6.0
Jefferson	1,756.3	-13.1

Births to Unwed Teenage Mothers:

	Number of Live Births	Births to Unwed Teen Mothers (number)	Births to Unwed Teen Mothers (percent)
Florida	218,045	20,449	9.4%
Jefferson	161	27	16.8%

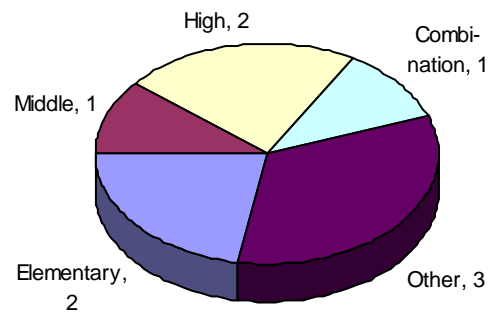
*Unless otherwise indicated, community data shows Florida Statistical Abstract information for 2004.

Jefferson

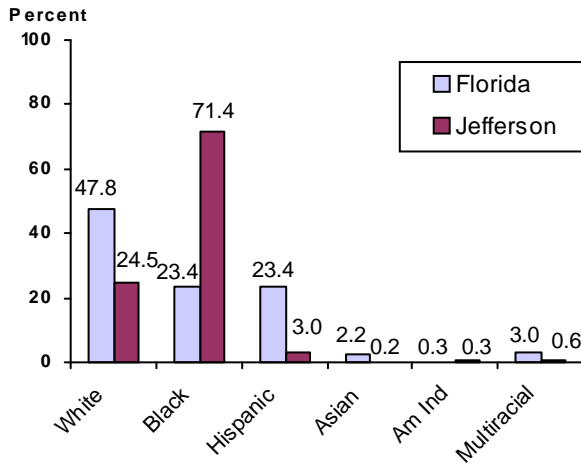
Education Data*

PK-12 Public School Membership: 1,225
Rank: 66

Number and Type of Public Schools:



PK-12 Membership by Race:

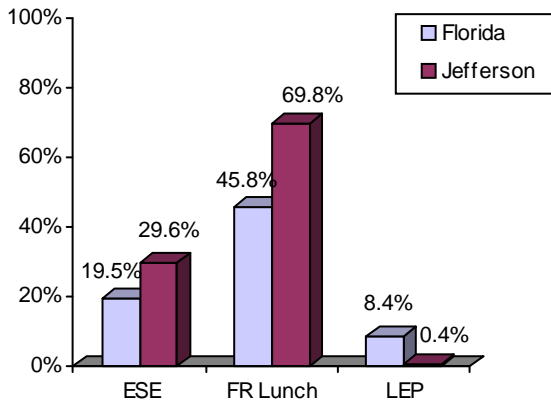


Average Teacher Salary by Degree Level:

	Bachelor's	Master's	Specialist	Doctorate
Florida	\$39,492	\$47,006	\$55,238	\$53,142
Jefferson	\$36,569	\$41,277	\$42,058	
All degrees:	Florida = \$42,702	Jefferson = \$38,275		

Special Needs Populations:

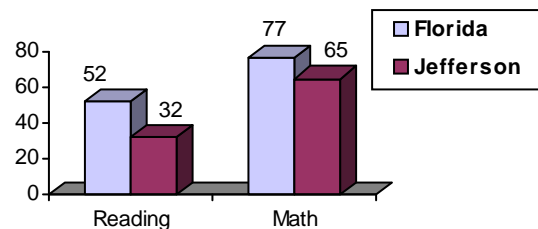
Free/Reduced-Price Lunch, ESE, and LEP Membership as a percentage of Total Membership



Percentage of Teachers with Degree Beyond Bachelor's: 35.7%

Student Performance:

Percent Passing Grade 10 Florida Comprehensive Assessment Test



Florida Writing Assessment Scores (Scale: 0 - 6)

	Grade 4	Grade 8	Grade 10
Florida	3.9	4.0	3.9
Jefferson	3.4	3.6	3.6

Administrators-to Staff Ratios:

	Administrators to Classroom Teachers	Administrators to Total Staff
Florida	1 : 15.42	1 : 30.20
Jefferson	1 : 5.47	1 : 13.29

Dropout Rate:

Florida : 3.5% Jefferson : 7.7%

Per-Student Operating Costs (2004-05):

	Florida	Jefferson
Expenditures per FTE	\$6,072	\$7,115