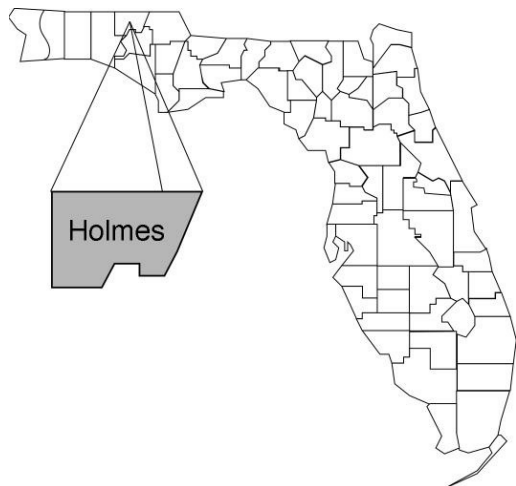


Holmes

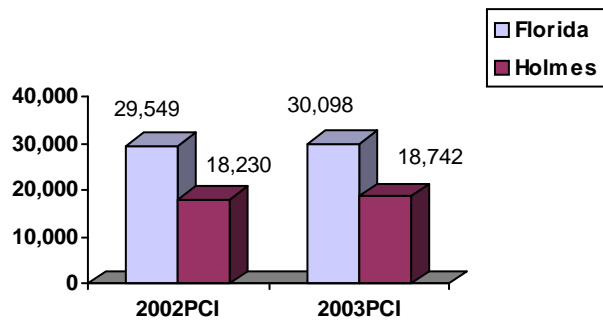
Community Data*



Population Density (per Sq. Mile):

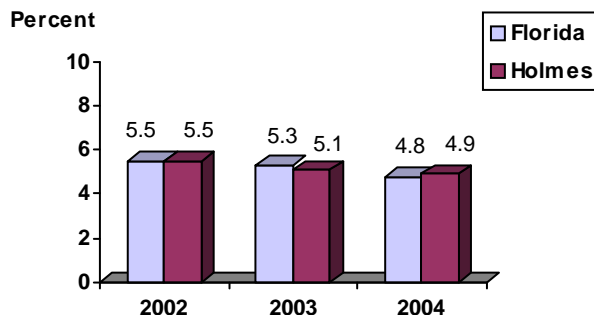
Florida 325
 Holmes 39 Rank in State: 53

Per Capita Income (\$):

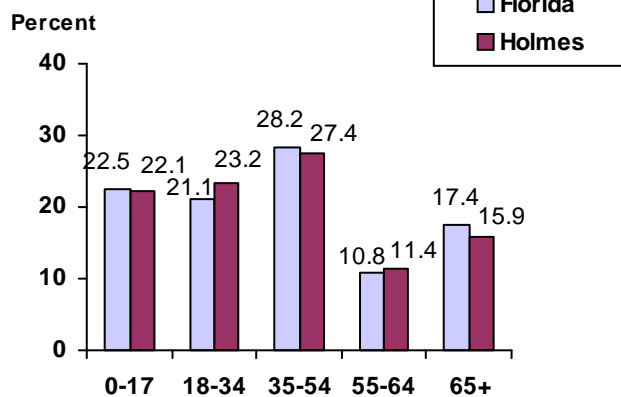


County Seat: Bonifay pop. 2,677
County Land Area (Sq. Miles): 482.5
County Water Area (Sq. Miles): 6.3
Population (2004): 19,012
 Projected (2010): 19,867

Unemployment Rate:



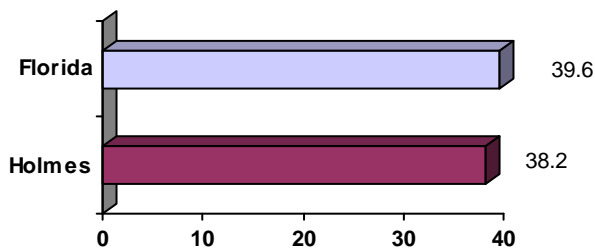
Population by Age Range:



Crime Rate:

	Rate per 100,000 Pop.	Percent Change 2003 to 2004
Florida	4,855.3	-6.0
Holmes	1,483.3	0.0

Median Age:



Births to Unwed Teenage Mothers:

	Number of Live Births	Births to Unwed Teen Mothers (number)	Births to Unwed Teen Mothers (percent)
Florida	218,045	20,449	9.4%
Holmes	215	27	12.6%

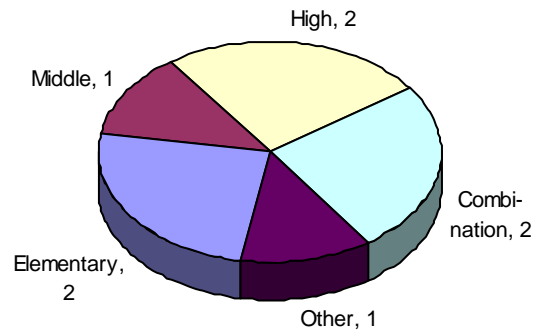
*Unless otherwise indicated, community data shows Florida Statistical Abstract information for 2004.

Holmes

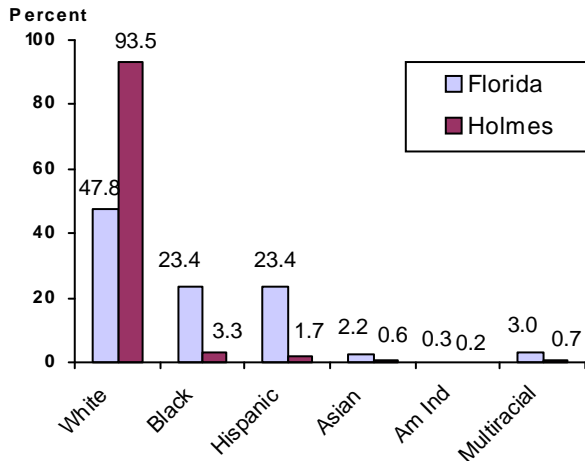
Education Data*

PK-12 Public School Membership: 3,439
Rank: 54

Number and Type of Public Schools:



PK-12 Membership by Race:

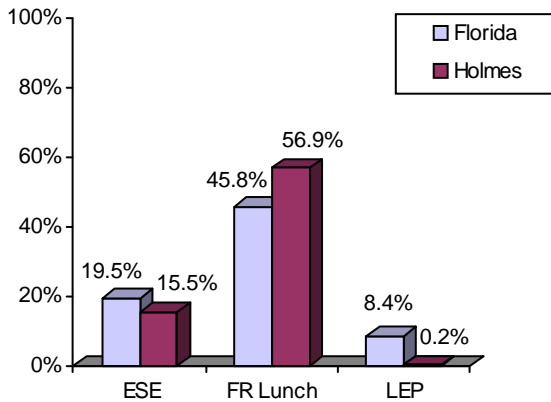


Average Teacher Salary by Degree Level:

	Bachelor's	Master's	Specialist	Doctorate
Florida	\$39,492	\$47,006	\$55,238	\$53,142
Holmes	\$34,435	\$41,551	\$39,262	
All degrees:	Florida = \$42,702	Holmes = \$37,318		

Special Needs Populations:

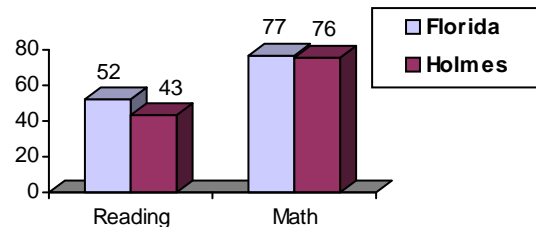
Free/Reduced-Price Lunch, ESE, and LEP Membership as a percentage of Total Membership



Percentage of Teachers with Degree Beyond Bachelor's: 40.6%

Student Performance:

Percent Passing Grade 10 Florida Comprehensive Assessment Test



Florida Writing Assessment Scores (Scale: 0 - 6)

	Grade 4	Grade 8	Grade 10
Florida	3.9	4.0	3.9
Holmes	3.5	3.5	4.0

Administrators-to Staff Ratios:

	Administrators to Classroom Teachers	Administrators to Total Staff
Florida	1 : 15.42	1 : 30.20
Holmes	1 : 9.33	1 : 19.41

Dropout Rate:

Florida : 3.5% Holmes : 3.8%

Per-Student Operating Costs (2004-05):

	Florida	Holmes
Expenditures per FTE	\$6,072	\$6,316

*Education data is for 2005-06 unless otherwise indicated.