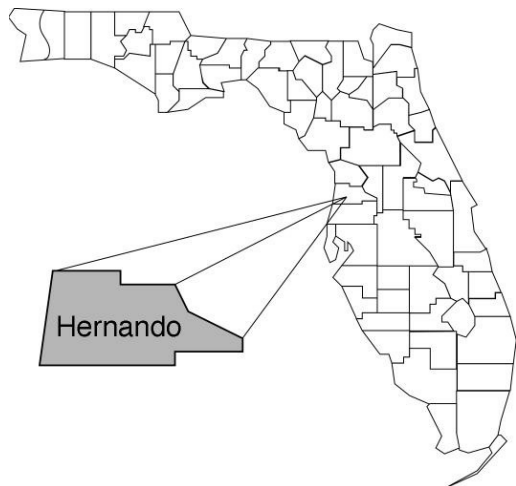


# Hernando

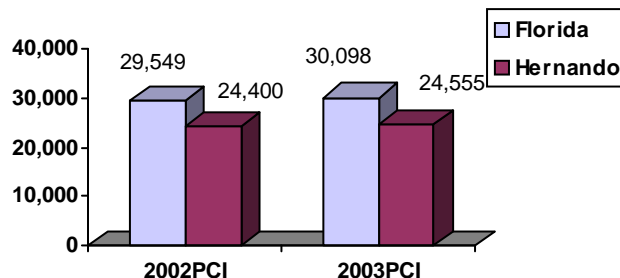
## Community Data\*



### Population Density (per Sq. Mile):

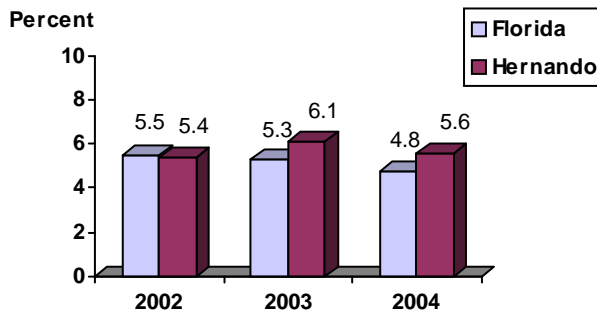
Florida	325	
Hernando	304	Rank in State: 18

### Per Capita Income (\$):

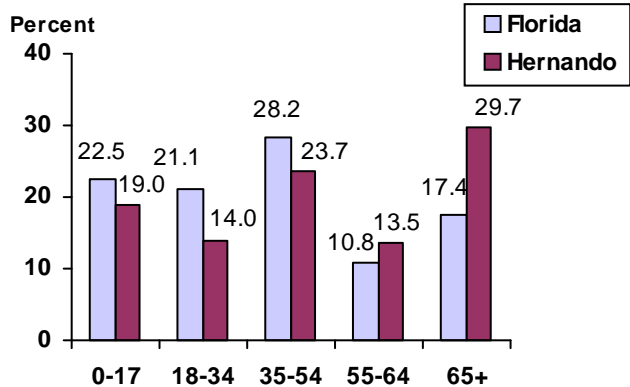


<b>County Seat:</b> Brooksville	pop.	7,279
<b>County Land Area (Sq. Miles):</b>		478.3
<b>County Water Area (Sq. Miles):</b>		110.8
<b>Population (2004):</b>		145,207
Projected (2010):		164,674

### Unemployment Rate:



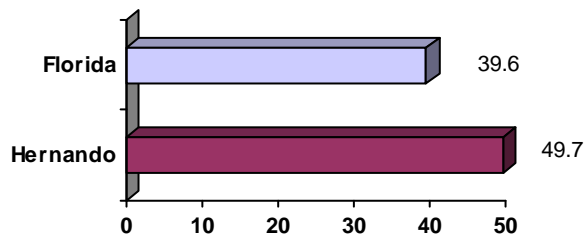
### Population by Age Range:



### Crime Rate:

	Rate per 100,000 Pop.	Percent Change 2003 to 2004
Florida	4,855.3	-6.0
Hernando	3,761.5	-13.7

### Median Age:



### Births to Unwed Teenage Mothers:

	Number of Live Births	Births to Unwed Teen Mothers (number)	Births to Unwed Teen Mothers (percent)
Florida	218,045	20,449	9.4%
Hernando	1,412	130	9.2%

\*Unless otherwise indicated, community data shows Florida Statistical Abstract information for 2004.

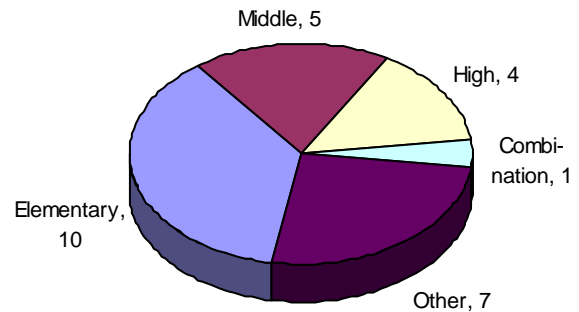
# Hernando

## Education Data\*

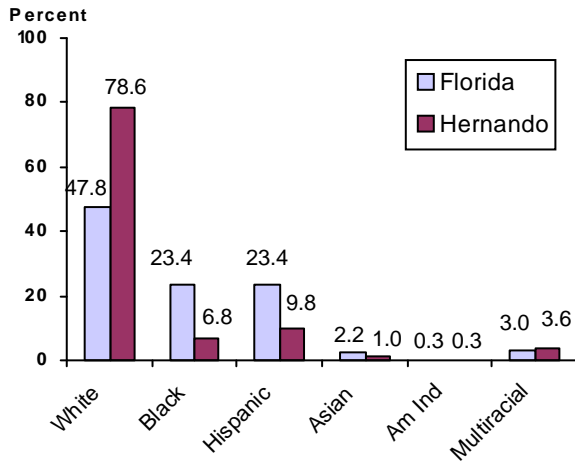
**PK-12 Public School Membership:** 21,707

Rank: 29

### Number and Type of Public Schools:



### PK-12 Membership by Race:



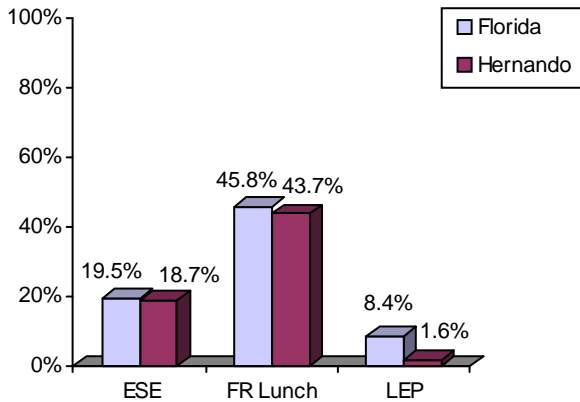
### Average Teacher Salary by Degree Level:

	Bachelor's	Master's	Specialist	Doctorate
Florida	\$39,492	\$47,006	\$55,238	\$53,142
Hernando	\$34,181	\$41,279	\$40,647	\$46,887

All degrees: Florida = \$42,702      Hernando = \$36,733

### Special Needs Populations:

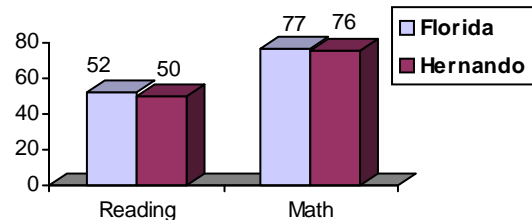
Free/Reduced-Price Lunch, ESE, and LEP Membership as a percentage of Total Membership



### Percentage of Teachers with Degree Beyond Bachelor's: 35.5%

### Student Performance:

Percent Passing Grade 10 Florida Comprehensive Assessment Test



### Florida Writing Assessment Scores (Scale: 0 - 6)

	Grade 4	Grade 8	Grade 10
Florida	3.9	4.0	3.9
Hernando	3.8	3.8	3.8

### Administrators-to Staff Ratios:

	Administrators to Classroom Teachers	Administrators to Total Staff
Florida	1 : 15.42	1 : 30.20
Hernando	1 : 16.93	1 : 34.90

### Dropout Rate:

Florida : 3.5%      Hernando : 4.9%

### Per-Student Operating Costs (2004-05):

	Florida	Hernando
Expenditures per FTE	\$6,072	\$5,479

\*Education data is for 2005-06 unless otherwise indicated.