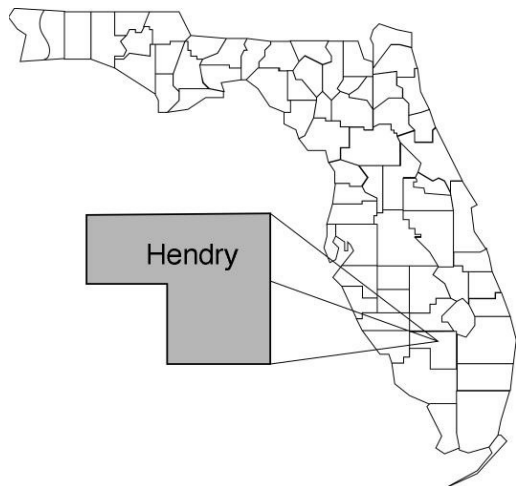


Hendry

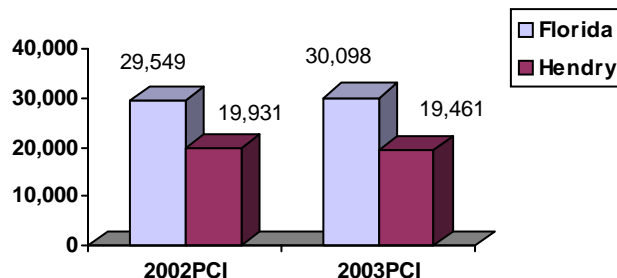
Community Data*



Population Density (per Sq. Mile):

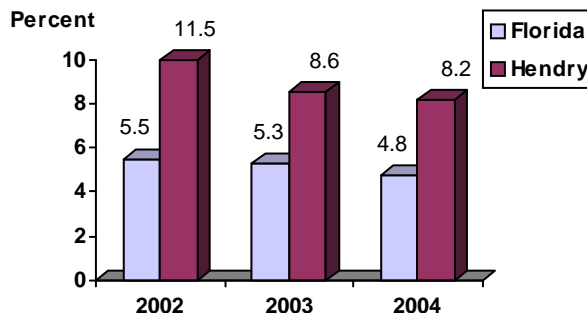
Florida 325
 Hendry 32 Rank in State: 56

Per Capita Income (\$):

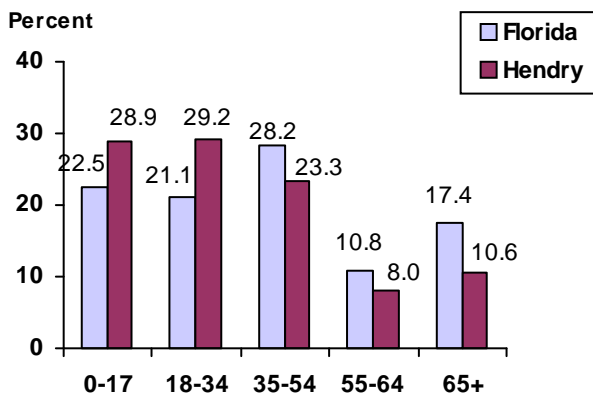


County Seat: La Belle pop. 4,387
County Land Area (Sq. Miles): 1,152.5
County Water Area (Sq. Miles): 37.3
Population (2004): 37,394
 Projected (2010): 43,295

Unemployment Rate:



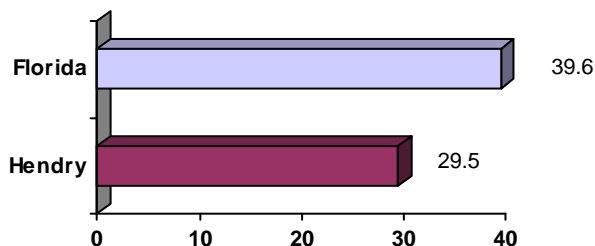
Population by Age Range:



Crime Rate:

	Rate per 100,000 Pop.	Percent Change 2003 to 2004
Florida	4,855.3	-6.0
Hendry	4,115.6	-2.2

Median Age:



Births to Unwed Teenage Mothers:

	Number of Live Births	Births to Unwed Teen Mothers (number)	Births to Unwed Teen Mothers (percent)
Florida	218,045	20,449	9.4%
Hendry	662	112	16.9%

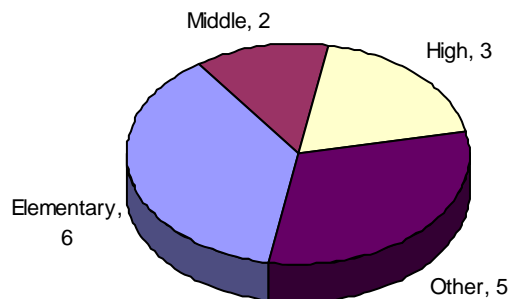
*Unless otherwise indicated, community data shows Florida Statistical Abstract information for 2004.

Hendry

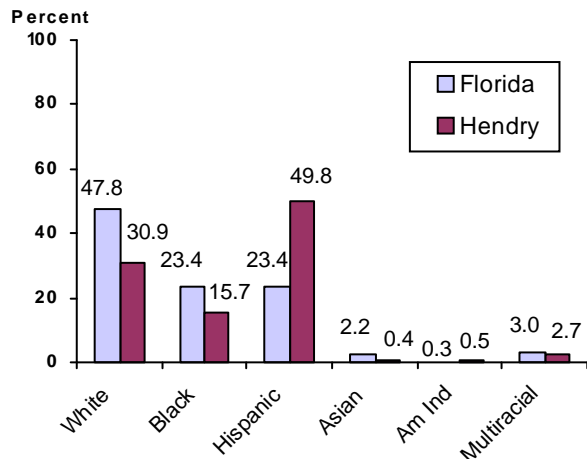
Education Data*

PK-12 Public School Membership: 7,572
Rank: 40

Number and Type of Public Schools:



PK-12 Membership by Race:

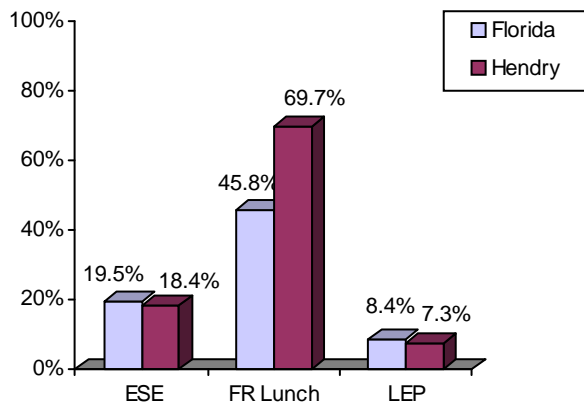


Average Teacher Salary by Degree Level:

	Bachelor's	Master's	Specialist	Doctorate
Florida	\$39,492	\$47,006	\$55,238	\$53,142
Hendry	\$39,182	\$46,276	\$48,064	\$53,420
All degrees:	Florida = \$42,702	Hendry = \$41,188		

Special Needs Populations:

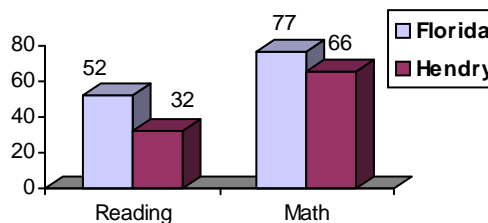
Free/Reduced-Price Lunch, ESE, and LEP Membership as a percentage of Total Membership



Percentage of Teachers with Degree Beyond Bachelor's: 27.3%

Student Performance:

Percent Passing Grade 10 Florida Comprehensive Assessment Test



Florida Writing Assessment Scores (Scale: 0 - 6)

	Grade 4	Grade 8	Grade 10
Florida	3.9	4.0	3.9
Hendry	3.6	3.7	3.4

Administrators-to Staff Ratios:

	Administrators to Classroom Teachers	Administrators to Total Staff
Florida	1 : 15.42	1 : 30.20
Hendry	1 : 12.11	1 : 27.71

Dropout Rate:

Florida : 3.5% Hendry : 4.2%

Per-Student Operating Costs (2004-05):

	Florida	Hendry
Expenditures per FTE	\$6,072	\$6,323

*Education data is for 2005-06 unless otherwise indicated.