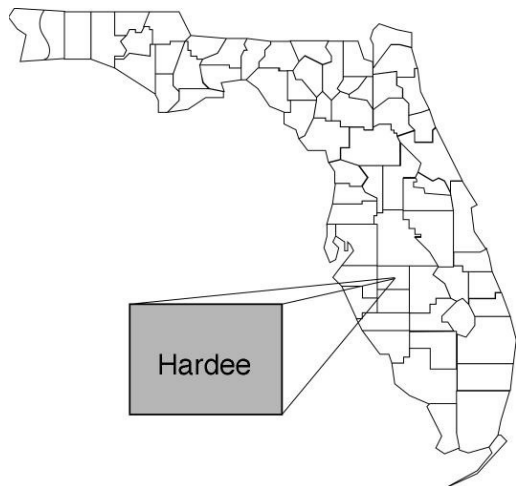


Hardee

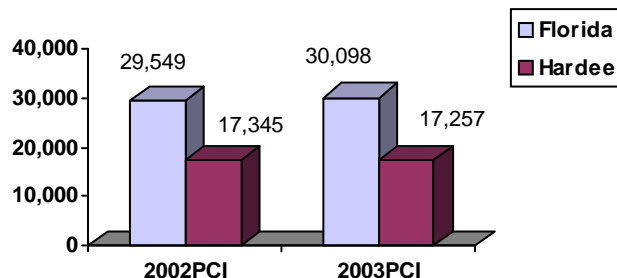
Community Data*



Population Density (per Sq. Mile):

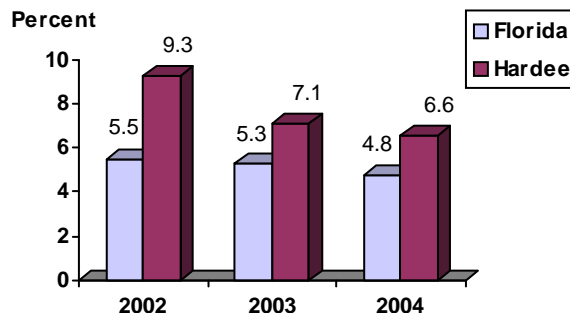
Florida	325
Hardee	44 Rank in State: 50

Per Capita Income (\$):

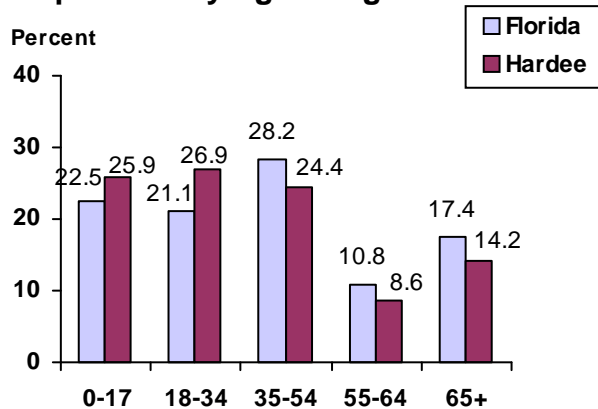


County Seat: Wauchula	pop.	4,405
County Land Area (Sq. Miles):		637.3
County Water Area (Sq. Miles):		1.0
Population (2004):		27,787
Projected (2010):		29,775

Unemployment Rate:



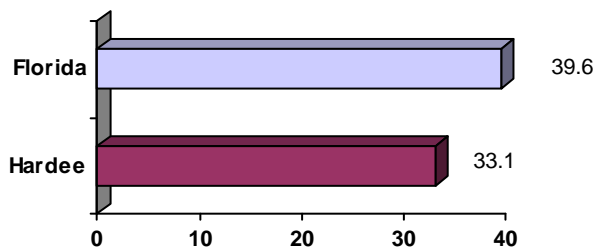
Population by Age Range:



Crime Rate:

	Rate per 100,000 Pop.	Percent Change 2003 to 2004
Florida	4,855.3	-6.0
Hardee	3,778.7	1.5

Median Age:



Births to Unwed Teenage Mothers:

	Number of Live Births	Births to Unwed Teen Mothers (number)	Births to Unwed Teen Mothers (percent)
Florida	218,045	20,449	9.4%
Hardee	494	78	15.8%

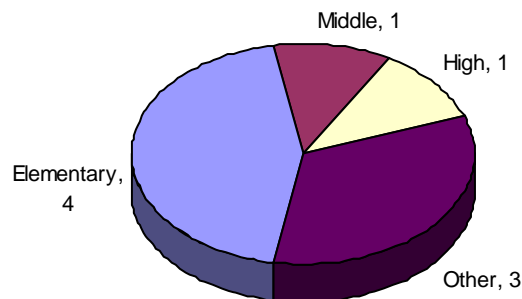
*Unless otherwise indicated, community data shows Florida Statistical Abstract information for 2004.

Hardee

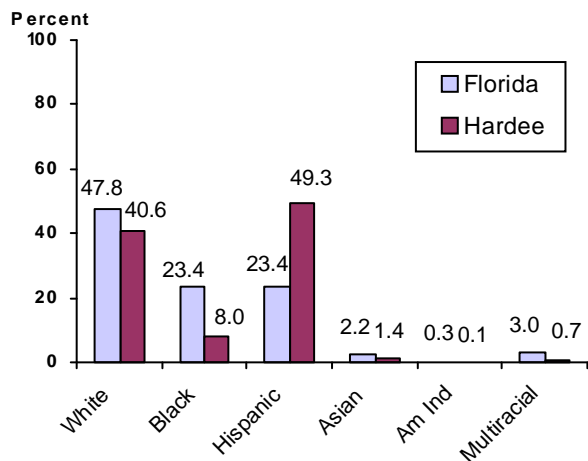
Education Data*

PK-12 Public School Membership: 4,967
Rank: 49

Number and Type of Public Schools:



PK-12 Membership by Race:

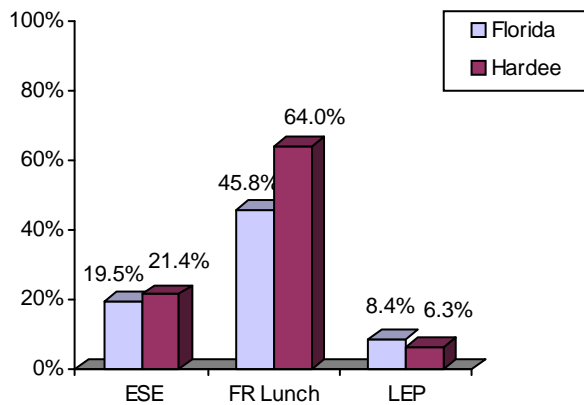


Average Teacher Salary by Degree Level:

	Bachelor's	Master's	Specialist	Doctorate
Florida	\$39,492	\$47,006	\$55,238	\$53,142
Hardee	\$38,097	\$44,757	\$55,149	\$41,874
All degrees:	Florida = \$42,702	Hardee = \$39,401		

Special Needs Populations:

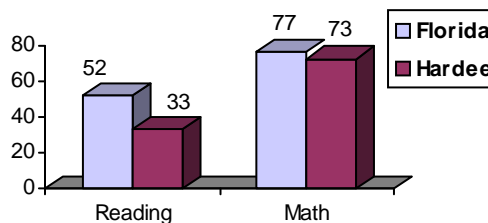
Free/Reduced-Price Lunch, ESE, and LEP Membership as a percentage of Total Membership



Percentage of Teachers with Degree Beyond Bachelor's: 19.0%

Student Performance:

Percent Passing Grade 10 Florida Comprehensive Assessment Test



Florida Writing Assessment Scores (Scale: 0 - 6)

	Grade 4	Grade 8	Grade 10
Florida	3.9	4.0	3.9
Hardee	3.7	3.6	3.6

Administrators-to Staff Ratios:

	Administrators to Classroom Teachers	Administrators to Total Staff
Florida	1 : 15.42	1 : 30.20
Hardee	1 : 11.89	1 : 25.85

Dropout Rate:

Florida : 3.5% Hardee : 5.7%

Per-Student Operating Costs (2004-05):

	Florida	Hardee
Expenditures per FTE	\$6,072	\$5,926