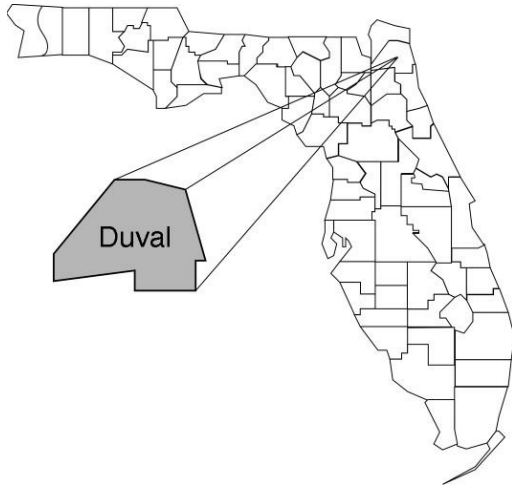


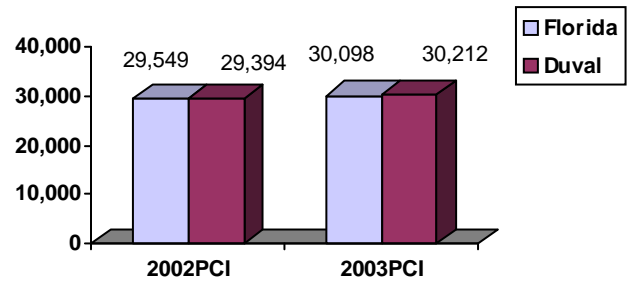
Duval Community Data*



Population Density (per Sq. Mile):

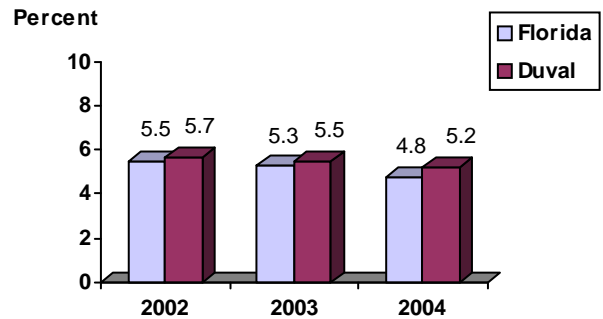
Florida 325
 Duval 1,086 Rank in State: 6

Per Capita Income (\$):

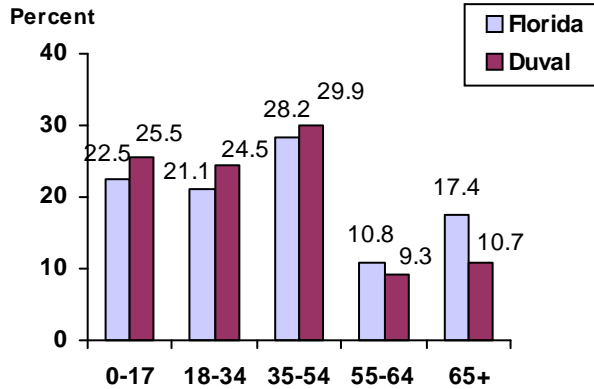


County Seat: Jacksonville pop. 795,985
County Land Area (Sq. Miles): 773.7
County Water Area (Sq. Miles): 144.6
Population (2004): 840,474
 Projected (2010): 917,943

Unemployment Rate:



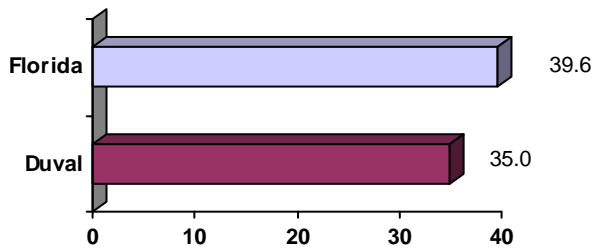
Population by Age Range:



Crime Rate:

	Rate per 100,000 Pop.	Percent Change 2003 to 2004
Florida	4,855.3	-6.0
Duval	6,253.4	-2.6

Median Age:



Births to Unwed Teenage Mothers:

	Number of Live Births	Births to Unwed Teen Mothers (number)	Births to Unwed Teen Mothers (percent)
Florida	218,045	20,449	9.4%
Duval	12,702	1,353	10.7%

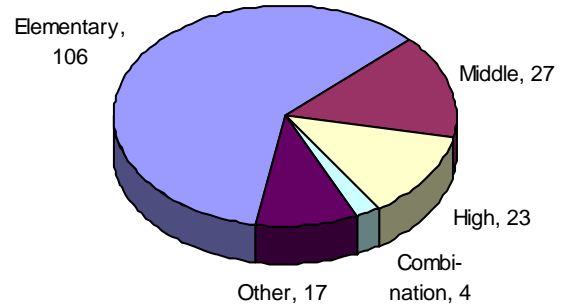
*Unless otherwise indicated, community data shows Florida Statistical Abstract information for 2004.

Duval

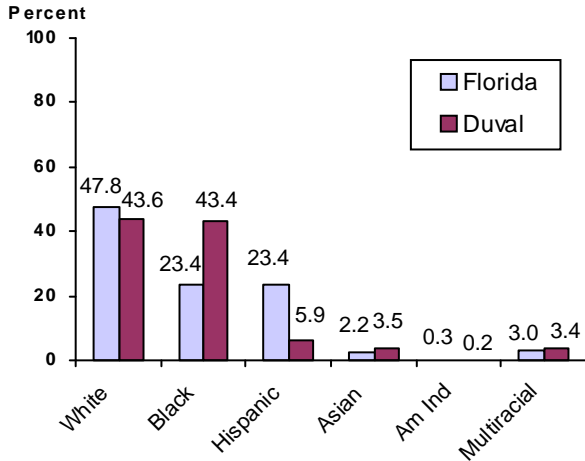
Education Data*

PK-12 Public School Membership: 126,535
Rank: 6

Number and Type of Public Schools:



PK-12 Membership by Race:

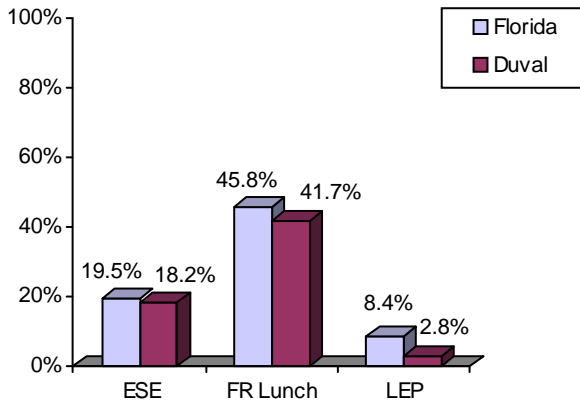


Average Teacher Salary by Degree Level:

	Bachelor's	Master's	Specialist	Doctorate
Florida	\$39,492	\$47,006	\$55,238	\$53,142
Duval	\$40,029	\$47,999	\$54,973	\$51,909
All degrees:	Florida = \$42,702	Duval = \$42,668		

Special Needs Populations:

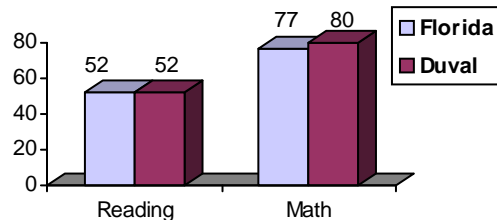
Free/Reduced-Price Lunch, ESE, and LEP Membership as a percentage of Total Membership



Percentage of Teachers with Degree Beyond Bachelor's: 32.3%

Student Performance:

Percent Passing Grade 10 Florida Comprehensive Assessment Test



Administrators-to Staff Ratios:

	Administrators to Classroom Teachers	Administrators to Total Staff
Florida	1 : 15.42	1 : 30.20
Duval	1 : 12.39	1 : 20.90

Florida Writing Assessment Scores (Scale: 0 - 6)

	Grade 4	Grade 8	Grade 10
Florida	3.9	4.0	3.9
Duval	3.7	3.9	3.9

Dropout Rate:

Florida : 3.5% Duval : 6.6%

Per-Student Operating Costs (2004-05):

	Florida	Duval
Expenditures per FTE	\$6,072	\$5,658