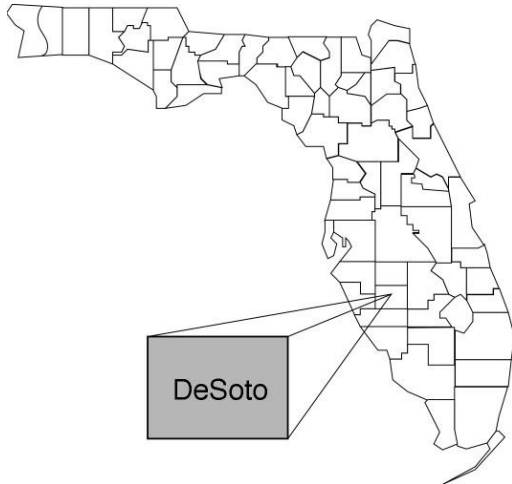


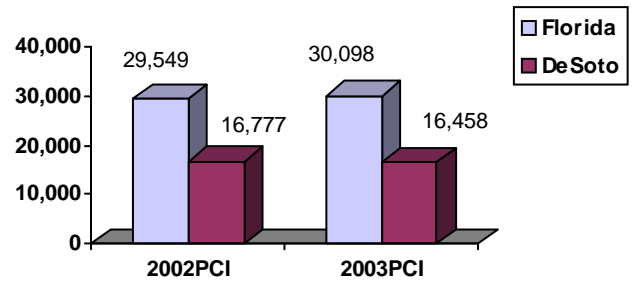
DeSoto Community Data*



Population Density (per Sq. Mile):

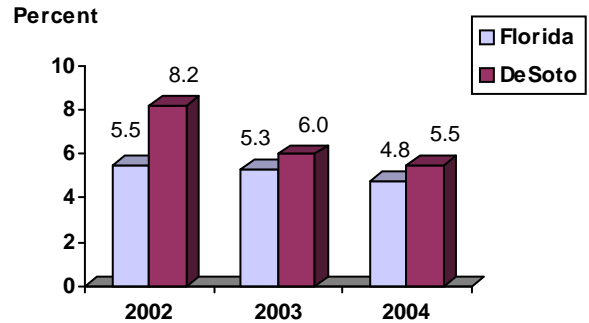
Florida	325	
DeSoto	54	Rank in State: 45

Per Capita Income (\$):

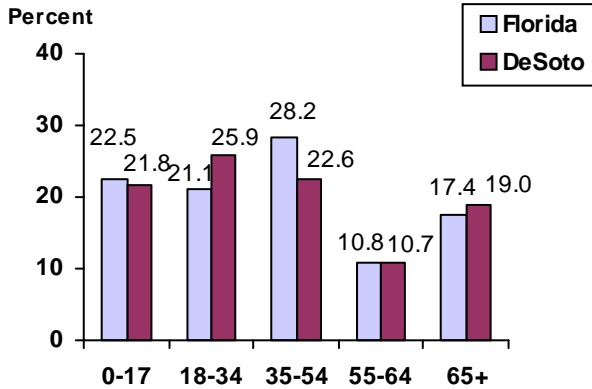


County Seat: Arcadia	pop.	6,854
County Land Area (Sq. Miles):		637.3
County Water Area (Sq. Miles):		2.2
Population (2004):		34,105
Projected (2010):		39,251

Unemployment Rate:



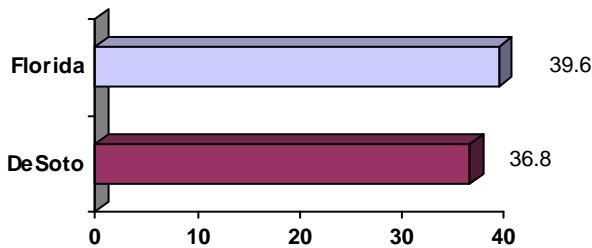
Population by Age Range:



Crime Rate:

	Rate per 100,000 Pop.	Percent Change 2003 to 2004
Florida	4,855.3	-6.0
DeSoto	3,301.6	-23.9

Median Age:



Births to Unwed Teenage Mothers:

	Number of Live Births	Births to Unwed Teen Mothers (number)	Births to Unwed Teen Mothers (percent)
Florida	218,045	20,449	9.4%
DeSoto	425	57	13.4%

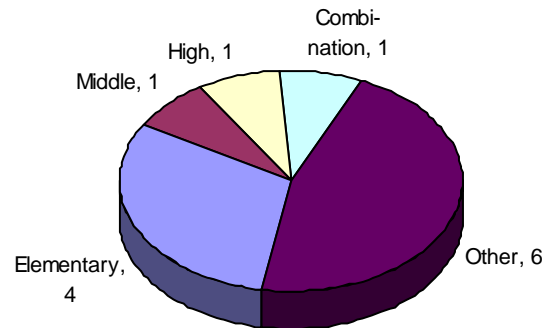
*Unless otherwise indicated, community data shows Florida Statistical Abstract information for 2004.

DeSoto

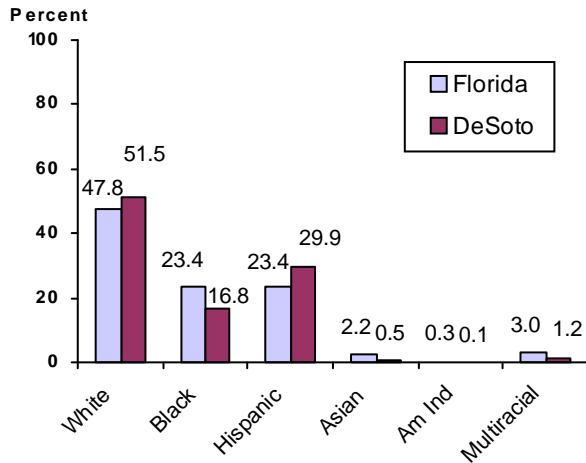
Education Data*

PK-12 Public School Membership: 5,019
Rank: 48

Number and Type of Public Schools:



PK-12 Membership by Race:

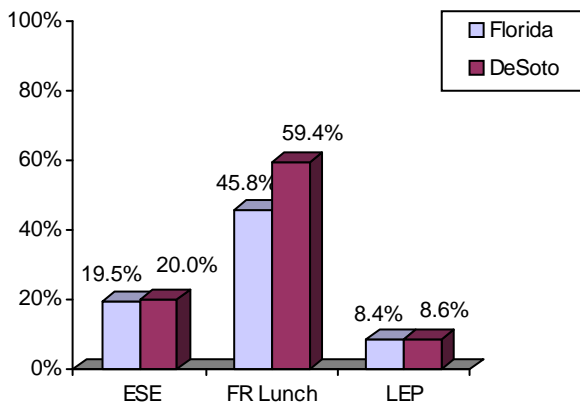


Average Teacher Salary by Degree Level:

	Bachelor's	Master's	Specialist	Doctorate
Florida	\$39,492	\$47,006	\$55,238	\$53,142
DeSoto	\$38,092	\$45,496		\$35,832
All degrees:	Florida = \$42,702	DeSoto = \$39,685		

Special Needs Populations:

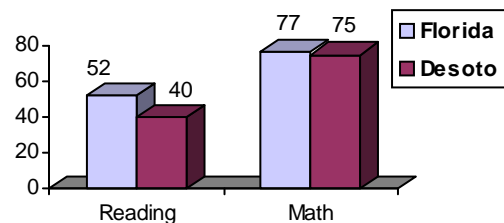
Free/Reduced-Price Lunch, ESE, and LEP Membership as a percentage of Total Membership



Percentage of Teachers with Degree Beyond Bachelor's: 23.4%

Student Performance:

Percent Passing Grade 10 Florida Comprehensive Assessment Test



Florida Writing Assessment Scores (Scale: 0 - 6)

	Grade 4	Grade 8	Grade 10
Florida	3.9	4.0	3.9
Desoto	3.8	3.7	3.5

Administrators-to Staff Ratios:

	Administrators to Classroom Teachers	Administrators to Total Staff
Florida	1 : 15.42	1 : 30.20
DeSoto	1 : 11.33	1 : 25.81

Dropout Rate:

Florida : 3.5% DeSoto : 6.1%

Per-Student Operating Costs (2004-05):

	Florida	DeSoto
Expenditures per FTE	\$6,072	\$7,091

*Education data is for 2005-06 unless otherwise indicated.