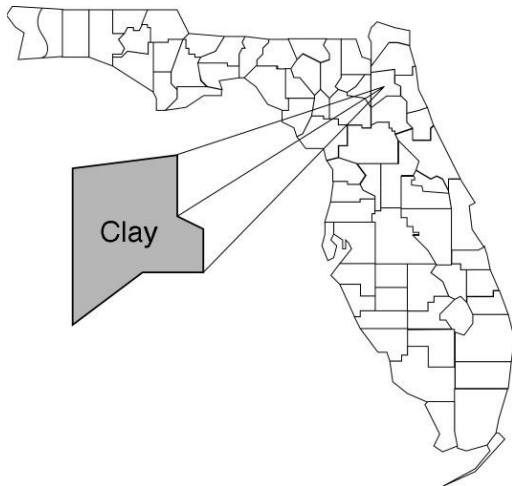


Clay

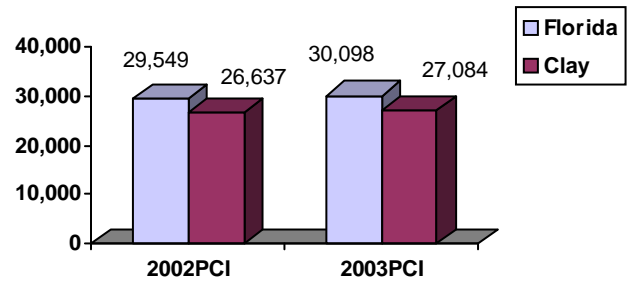
Community Data*



Population Density (per Sq. Mile):

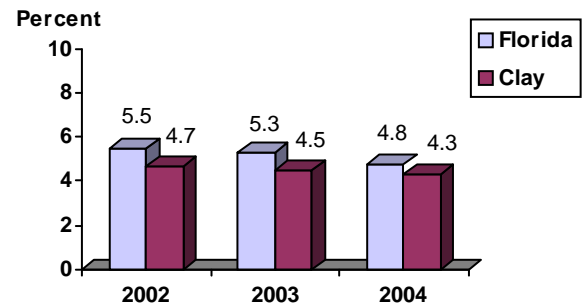
Florida	325	
Clay	272	Rank in State: 20

Per Capita Income (\$):

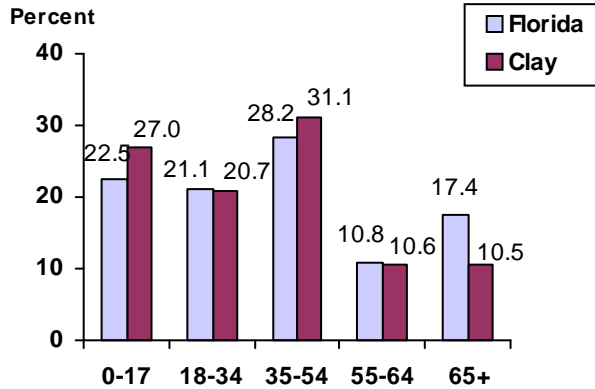


County Seat:	Green Cove Springs	pop.	5,957
County Land Area (Sq. Miles):			601.1
County Water Area (Sq. Miles):			42.6
Population (2004):			163,461
Projected (2010):			192,706

Unemployment Rate:



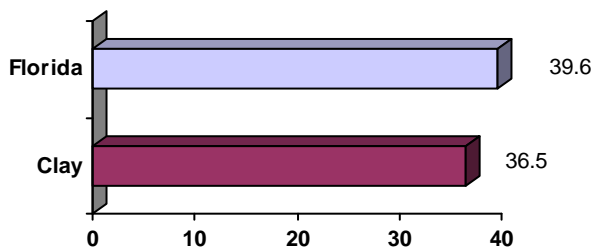
Population by Age Range:



Crime Rate:

	Rate per 100,000 Pop.	Percent Change 2003 to 2004
Florida	4,855.3	-6.0
Clay	2,606.7	5.0

Median Age:



Births to Unwed Teenage Mothers:

	Number of Live Births	Births to Unwed Teen Mothers (number)	Births to Unwed Teen Mothers (percent)
Florida	218,045	20,449	9.4%
Clay	2,110	151	7.2%

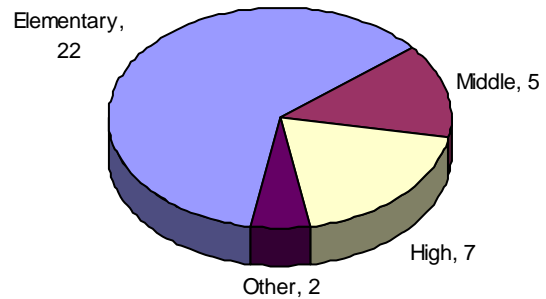
*Unless otherwise indicated, community data shows Florida Statistical Abstract information for 2004.

Clay

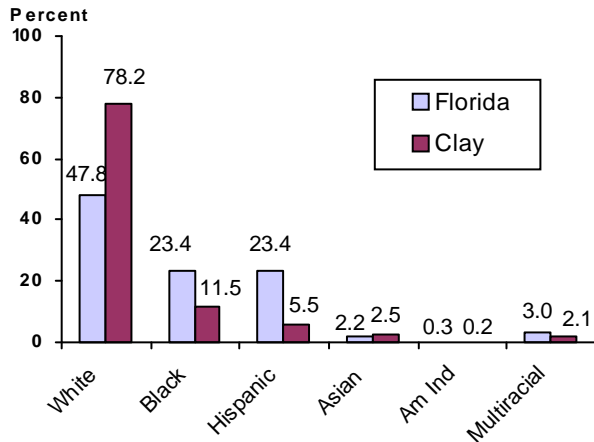
Education Data*

PK-12 Public School Membership: 34,152
Rank: 22

Number and Type of Public Schools:



PK-12 Membership by Race:

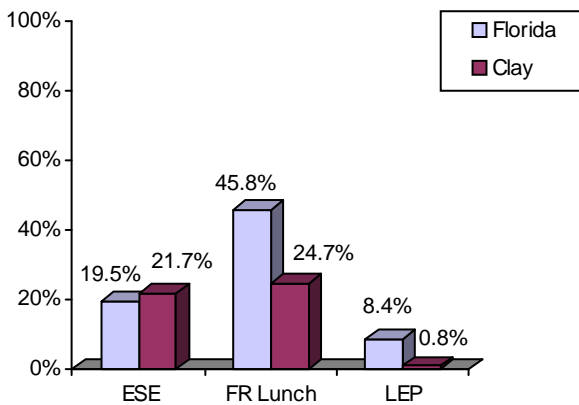


Average Teacher Salary by Degree Level:

	Bachelor's	Master's	Specialist	Doctorate
Florida	\$39,492	\$47,006	\$55,238	\$53,142
Clay	\$37,669	\$43,329	\$55,815	\$47,705
All degrees:	Florida = \$42,702	Clay = \$39,504		

Special Needs Populations:

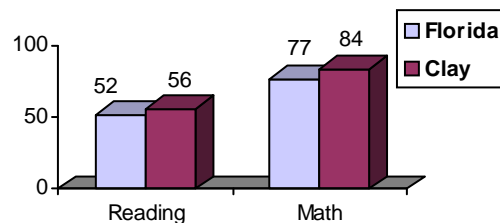
Free/Reduced-Price Lunch, ESE, and LEP Membership as a percentage of Total Membership



Percentage of Teachers with Degree Beyond Bachelor's: 31.0%

Student Performance:

Percent Passing Grade 10 Florida Comprehensive Assessment Test



Administrators-to Staff Ratios:

	Administrators to Classroom Teachers	Administrators to Total Staff
Florida	1 : 15.42	1 : 30.20
Clay	1 : 17.13	1 : 32.21

Florida Writing Assessment Scores (Scale: 0 - 6)

	Grade 4	Grade 8	Grade 10
Florida	3.9	4.0	3.9
Clay	4.0	4.0	3.9

Dropout Rate:

Florida : 3.5% Clay : 1.9%

Per-Student Operating Costs (2004-05):

	Florida	Clay
Expenditures per FTE	\$6,072	\$5,215