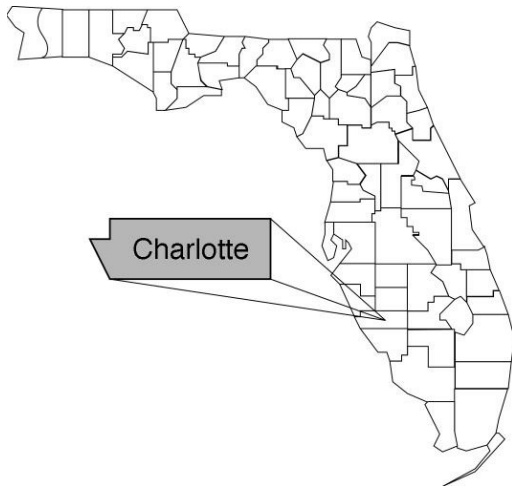


Charlotte

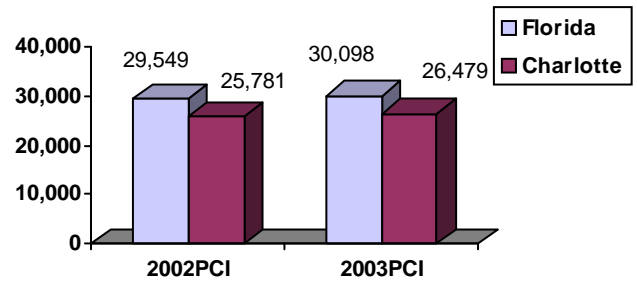
Community Data*



Population Density (per Sq. Mile):

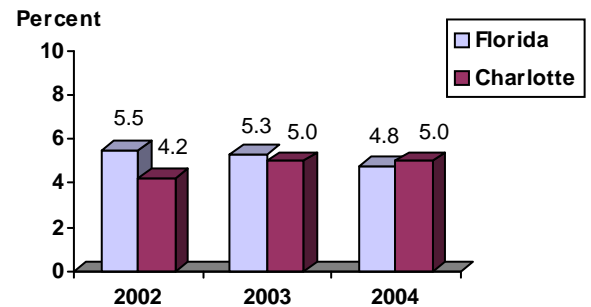
Florida	325		
Charlotte	226	Rank in State:	26

Per Capita Income (\$):

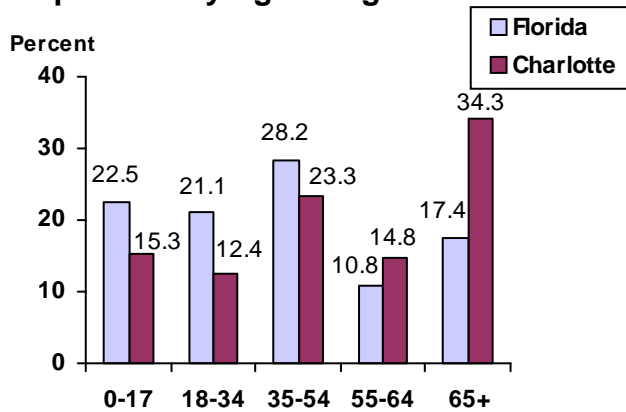


County Seat:	Punta Gorda	pop.	17,168
County Land Area (Sq. Miles):			693.6
County Water Area (Sq. Miles):			165.5
Population (2004):			156,985
Projected (2010):			177,783

Unemployment Rate:



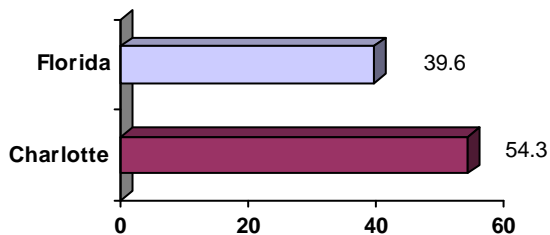
Population by Age Range:



Crime Rate:

	Rate per 100,000 Pop.	Percent Change 2003 to 2004
Florida	4,855.3	-6.0
Charlotte	3,369.1	3.2

Median Age:



Births to Unwed Teenage Mothers:

	Number of Live Births	Births to Unwed Teen Mothers (number)	Births to Unwed Teen Mothers (percent)
Florida	218,045	20,449	9.4%
Charlotte	1,073	108	10.1%

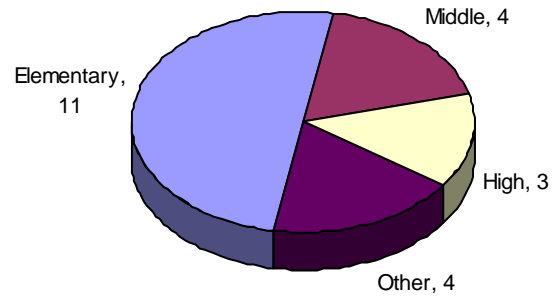
*Unless otherwise indicated, community data shows Florida Statistical Abstract information for 2004.

Charlotte

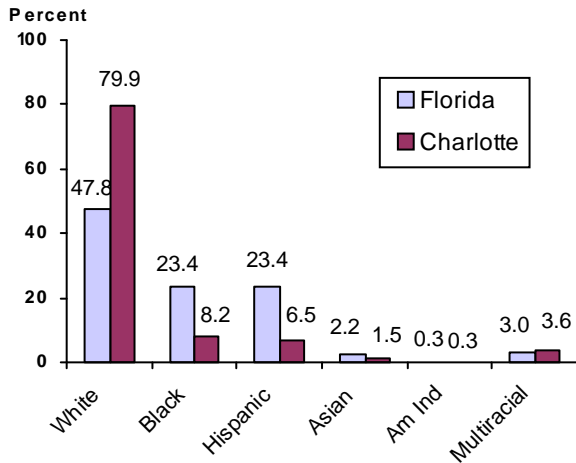
Education Data*

PK-12 Public School Membership: 17,868
Rank: 31

Number and Type of Public Schools:



PK-12 Membership by Race:

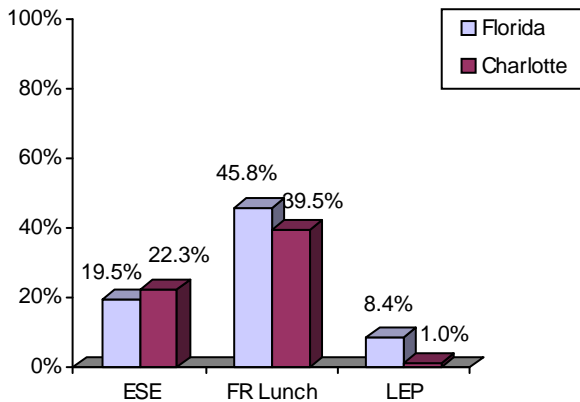


Average Teacher Salary by Degree Level:

	Bachelor's	Master's	Specialist	Doctorate
Florida	\$39,492	\$47,006	\$55,238	\$53,142
Charlotte	\$39,865	\$48,598	\$55,200	\$55,545
All degrees:	Florida = \$42,702	Charlotte = \$44,325		

Special Needs Populations:

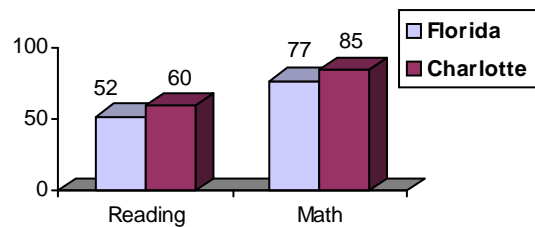
Free/Reduced-Price Lunch, ESE, and LEP Membership as a percentage of Total Membership



Percentage of Teachers with Degree Beyond Bachelor's: 48.5%

Student Performance:

Percent Passing Grade 10 Florida Comprehensive Assessment Test



Administrators-to Staff Ratios

	Administrators to Classroom Teachers	Administrators to Total Staff
Florida	1 : 15.42	1 : 30.20
Charlotte	1 : 13.94	1 : 31.91

Florida Writing Assessment Scores (Scale: 0 - 6)

	Grade 4	Grade 8	Grade 10
Florida	3.9	4.0	3.9
Charlotte	4.1	4.2	4.1

Dropout Rate:

Florida : 3.5% Charlotte : 2.5%

Per-Student Operating Costs (2004-05):

	Florida	Charlotte
Expenditures per FTE	\$6,072	\$5,907