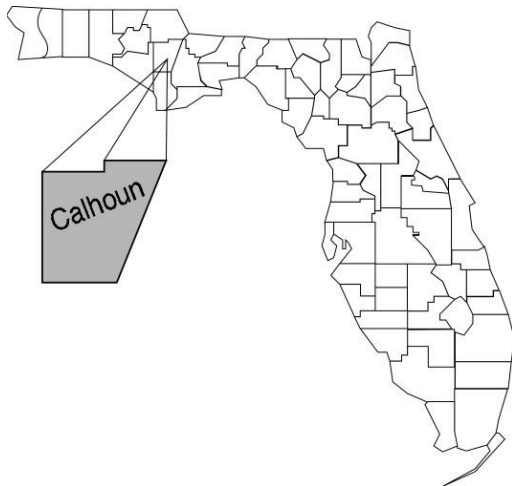


Calhoun

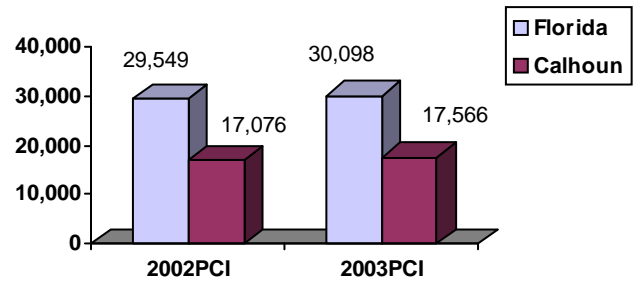
Community Data*



Population Density (per Sq. Mile):

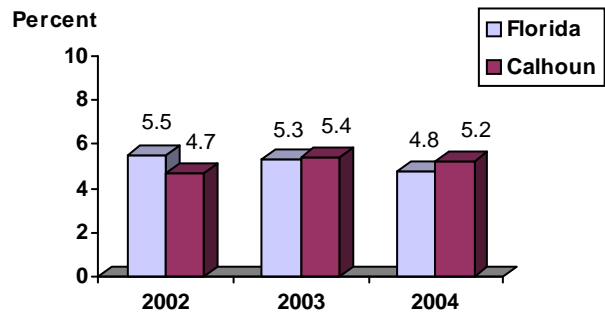
Florida	325
Calhoun	24 Rank in State: 60

Per Capita Income (\$):

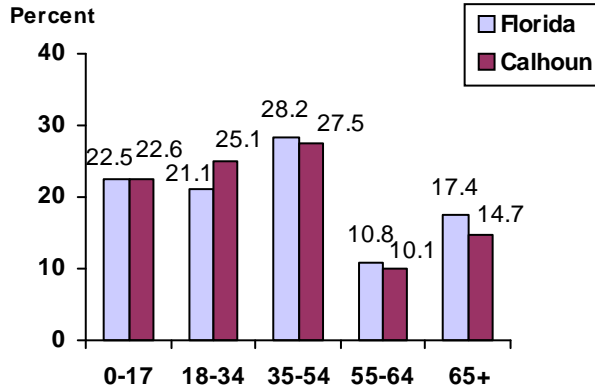


County Seat: Blountstown	pop.	2,452
County Land Area (Sq. Miles):		567.3
County Water Area (Sq. Miles):		7.0
Population (2004):		13,610
Projected (2010):		14,364

Unemployment Rate:



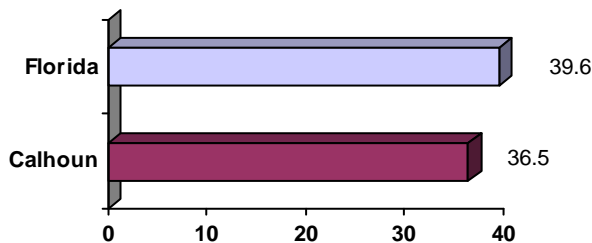
Population by Age Range:



Crime Rate:

	Rate per 100,000 Pop.	Percent Change 2003 to 2004
Florida	4,855.3	-6.0
Calhoun	991.9	-38.6

Median Age:



Births to Unwed Teenage Mothers:

	Number of Live Births	Births to Unwed Teen Mothers (number)	Births to Unwed Teen Mothers (percent)
Florida	218,045	20,449	9.4%
Calhoun	145	15	10.3%

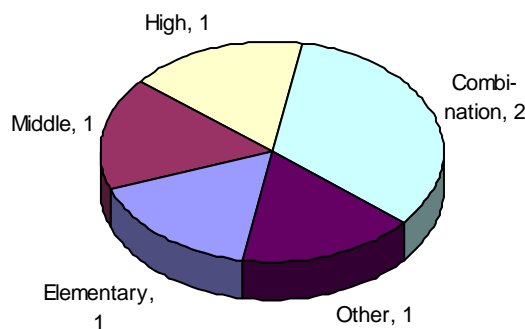
*Unless otherwise indicated, community data shows Florida Statistical Abstract information for 2004.

Calhoun Education Data*

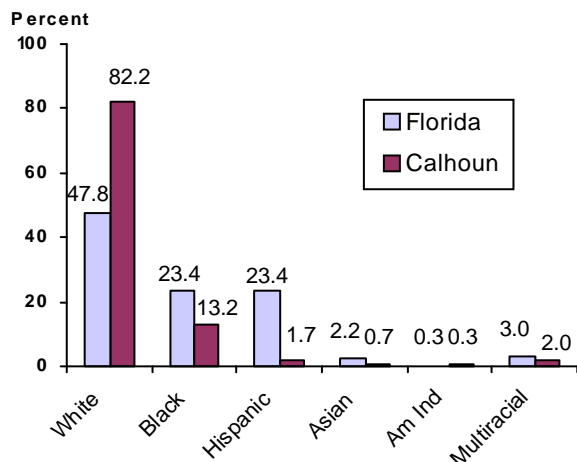
PK-12 Public School Membership: 2,274

Rank: 59

Number and Type of Public Schools:



PK-12 Membership by Race:

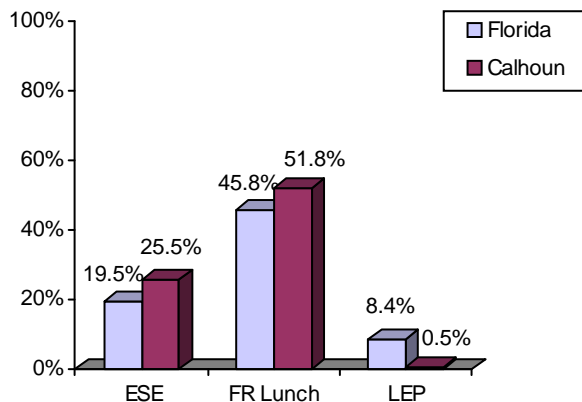


Average Teacher Salary by Degree Level:

	Bachelor's	Master's	Specialist	Doctorate
Florida	\$39,492	\$47,006	\$55,238	\$53,142
Calhoun	\$36,438	\$41,319	\$39,487	\$42,815
All degrees:	Florida = \$42,702	Calhoun = \$38,456		

Special Needs Populations:

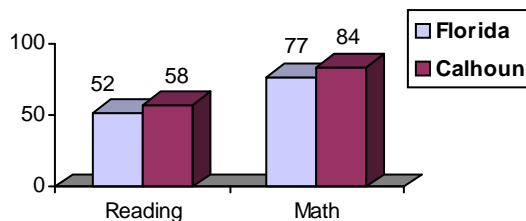
Free/Reduced-Price Lunch, ESE, and LEP Membership as a percentage of Total Membership



Percentage of Teachers with Degree Beyond Bachelor's: 42.4%

Student Performance:

Percent Passing Grade 10 Florida Comprehensive Assessment Test



Administrators-to Staff Ratios:

	Administrators to Classroom Teachers	Administrators to Total Staff
Florida	1 : 15.42	1 : 30.20
Calhoun	1 : 14.16	1 : 25.91

Florida Writing Assessment Scores (Scale: 0 - 6)

	Grade 4	Grade 8	Grade 10
Florida	3.9	4.0	3.9
Calhoun	3.6	3.9	3.8

Dropout Rate:

Florida : 3.5% Calhoun : 3.0%

Per-Student Operating Costs (2004-05):

	Florida	Calhoun
Expenditures per FTE	\$6,072	\$5,615