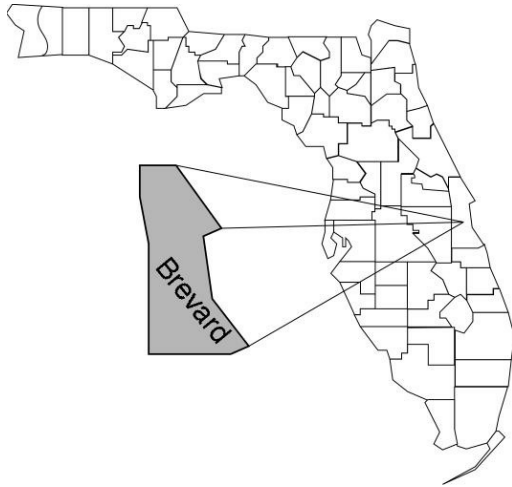


Brevard

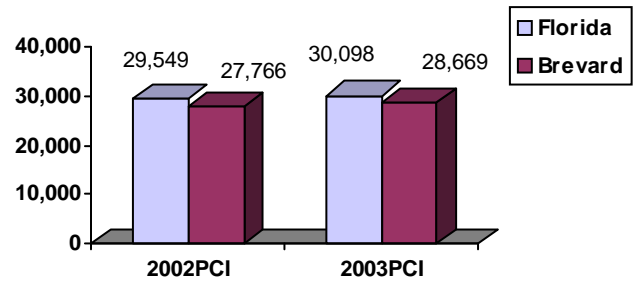
Community Data*



Population Density (per Sq. Mile):

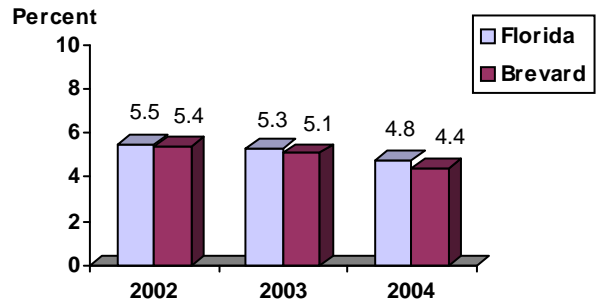
Florida	325	
Brevard	512	Rank in State: 12

Per Capita Income (\$):

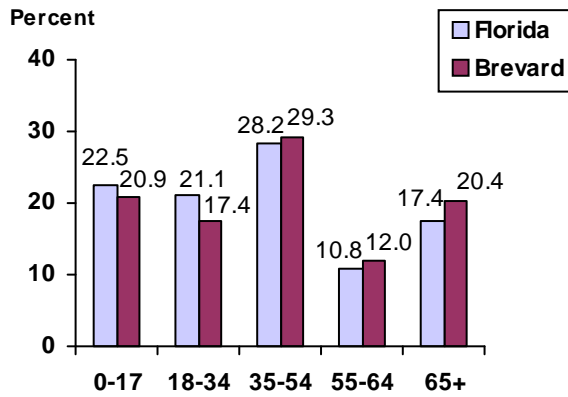


County Seat:	Titusville	pop.	43,029
County Land Area (Sq. Miles):	1,018.2		
County Water Area (Sq. Miles):	538.8		
Population (2004):	521,422		
Projected (2010):	577,253		

Unemployment Rate:



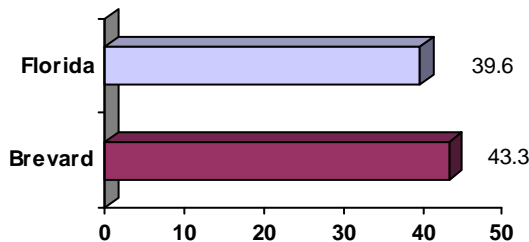
Population by Age Range:



Crime Rate:

	Rate per 100,000 Pop.	Percent Change 2003 to 2004
Florida	4,855.3	-6.0
Brevard	3,589.8	-16.1

Median Age:



Births to Unwed Teenage Mothers:

	Number of Live Births	Births to Unwed Teen Mothers (number)	Births to Unwed Teen Mothers (percent)
Florida	218,045	20,449	9.4%
Brevard	5,214	469	9.0%

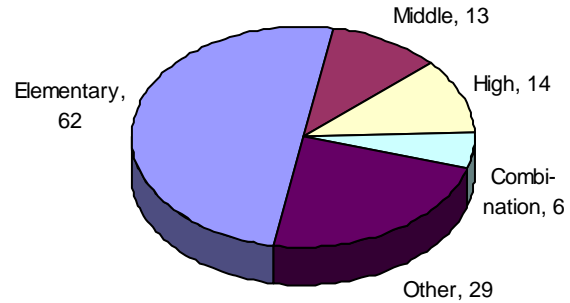
*Unless otherwise indicated, community data shows Florida Statistical Abstract information for 2004.

Brevard

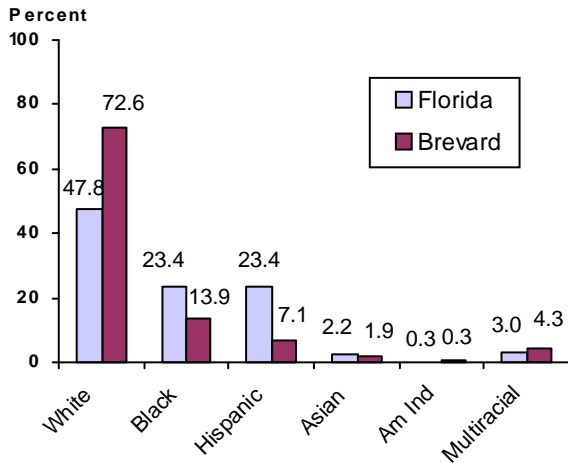
Education Data*

PK-12 Public School Membership: 75,160
Rank: 10

Number and Type of Public Schools:



PK-12 Membership by Race:

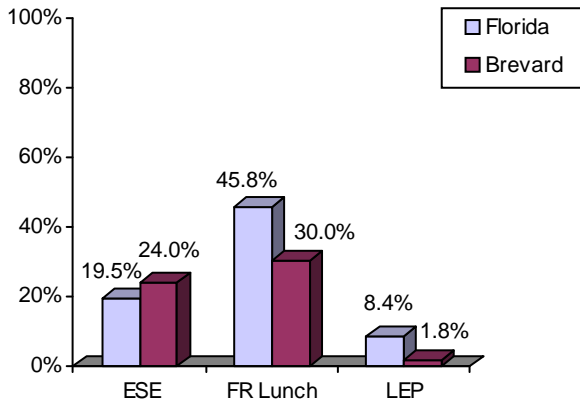


Average Teacher Salary by Degree Level:

	Bachelor's	Master's	Specialist	Doctorate
Florida	\$39,492	\$47,006	\$55,238	\$53,142
Brevard	\$38,601	\$45,023	\$50,713	\$48,208
All degrees:	Florida = \$42,702	Brevard = \$41,141		

Special Needs Populations:

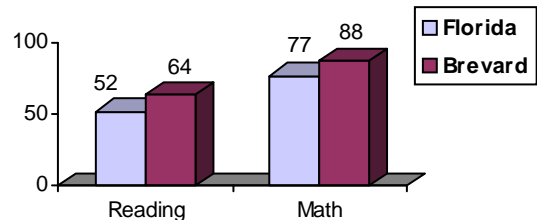
Free/Reduced-Price Lunch, ESE, and LEP Membership as a percentage of Total Membership



Percentage of Teachers with Degree Beyond Bachelor's: 38.4%

Student Performance:

Percent Passing Grade 10 Florida Comprehensive Assessment Test



Administrators-to Staff Ratios:

	Administrators to Classroom Teachers	Administrators to Total Staff
Florida	1 : 15.42	1 : 30.20
Brevard	1 : 16.39	1 : 30.46

Florida Writing Assessment Scores (Scale: 0 - 6)

	Grade 4	Grade 8	Grade 10
Florida	3.9	4.0	3.9
Brevard	4.0	4.0	4.1

Dropout Rate:

Florida : 3.5% Brevard : 0.8%

Per-Student Operating Costs (2004-05):

	Florida	Brevard
Expenditures per FTE	\$6,072	\$6,070